



# The Dark Universe

**Frontiers of Physics:  
Higgs, Dark Energy and Black Holes**

**UC Davis Physics  
6 April 2013**

Michael S. Turner  
Kavli Institute for Cosmological Physics  
The University of Chicago



DON'T LET THE BRIGHT  
LIGHTS FOOL YOU

THE DARK SIDE

CONTROLS THE UNIVERSE

OUR UNIVERSE

STARS: 0.5%

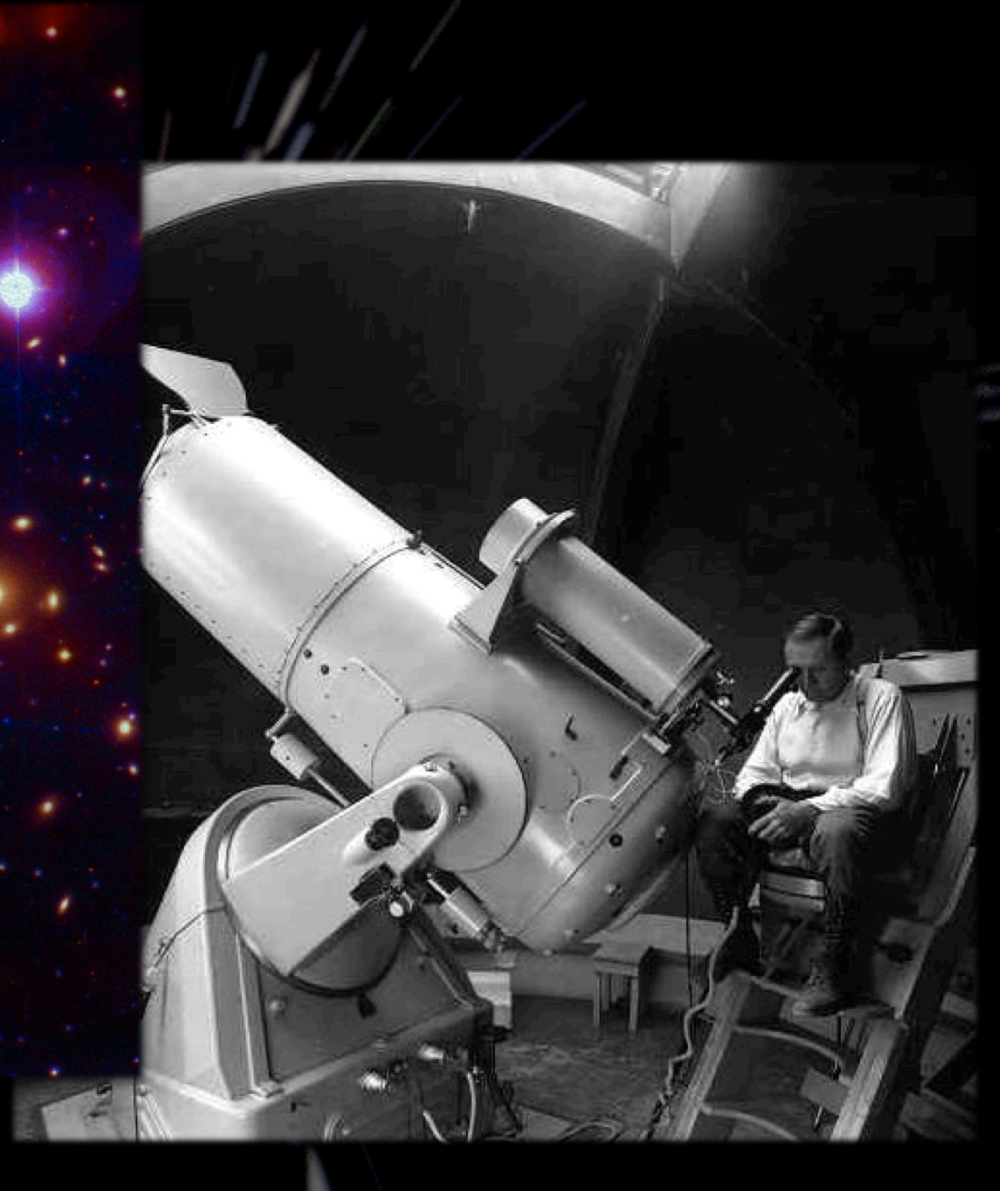
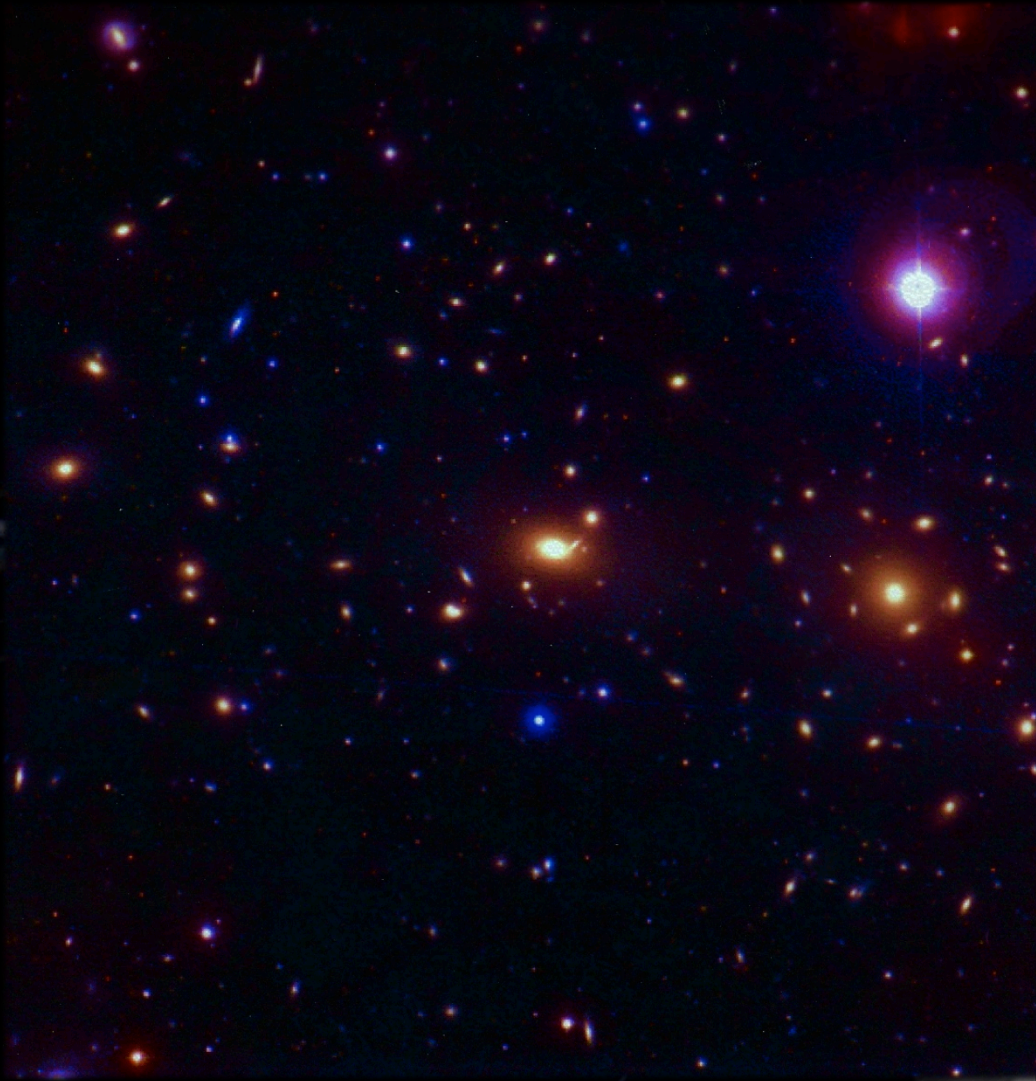
DARK MATTER: 33%

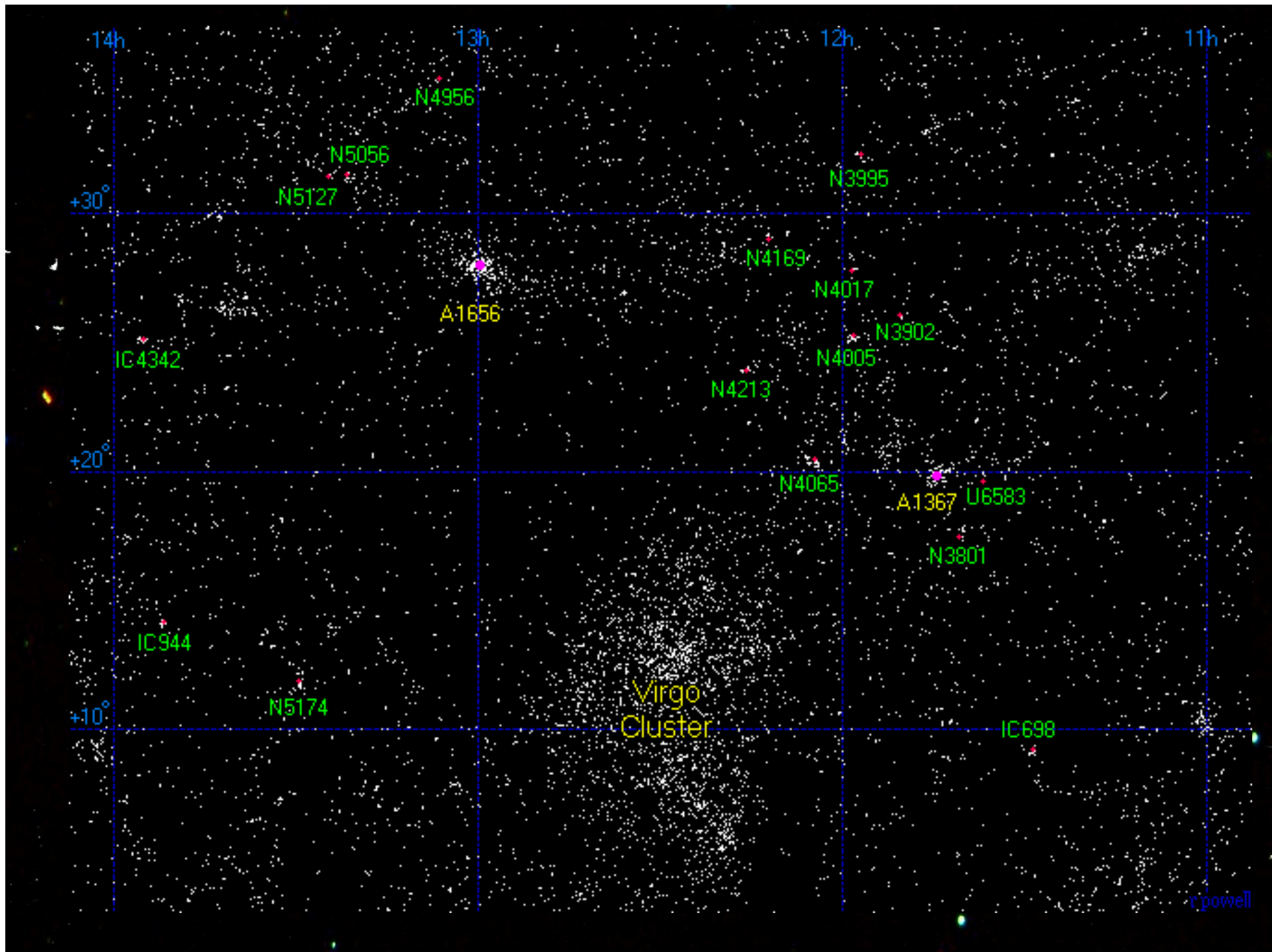
DARK ENERGY: 66%

DARK MATTER HOLDS IT TOGETHER

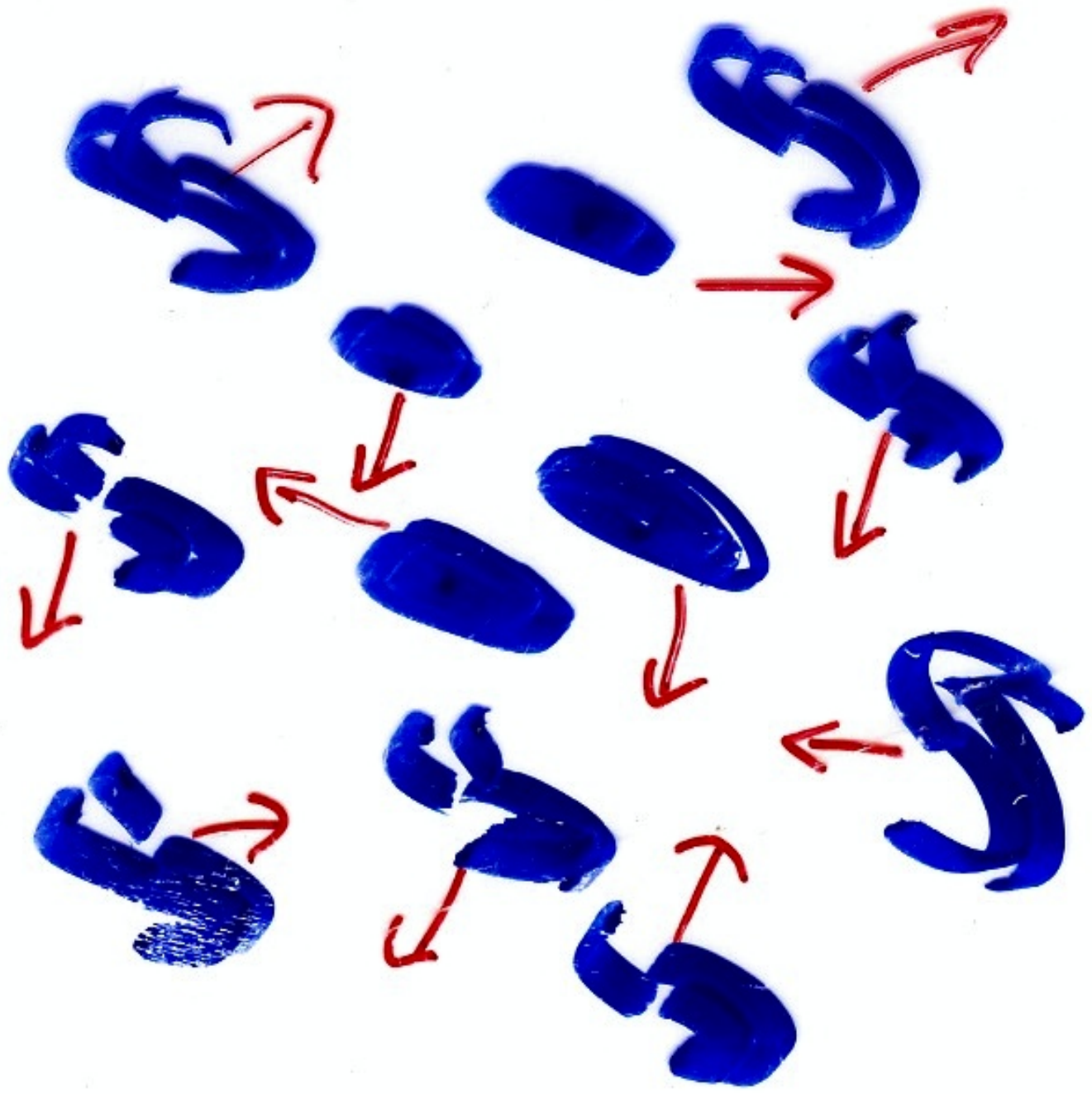
DARK ENERGY DETERMINES HIS DESTINY

# 1935: Zwicky, Coma and Dark Matter



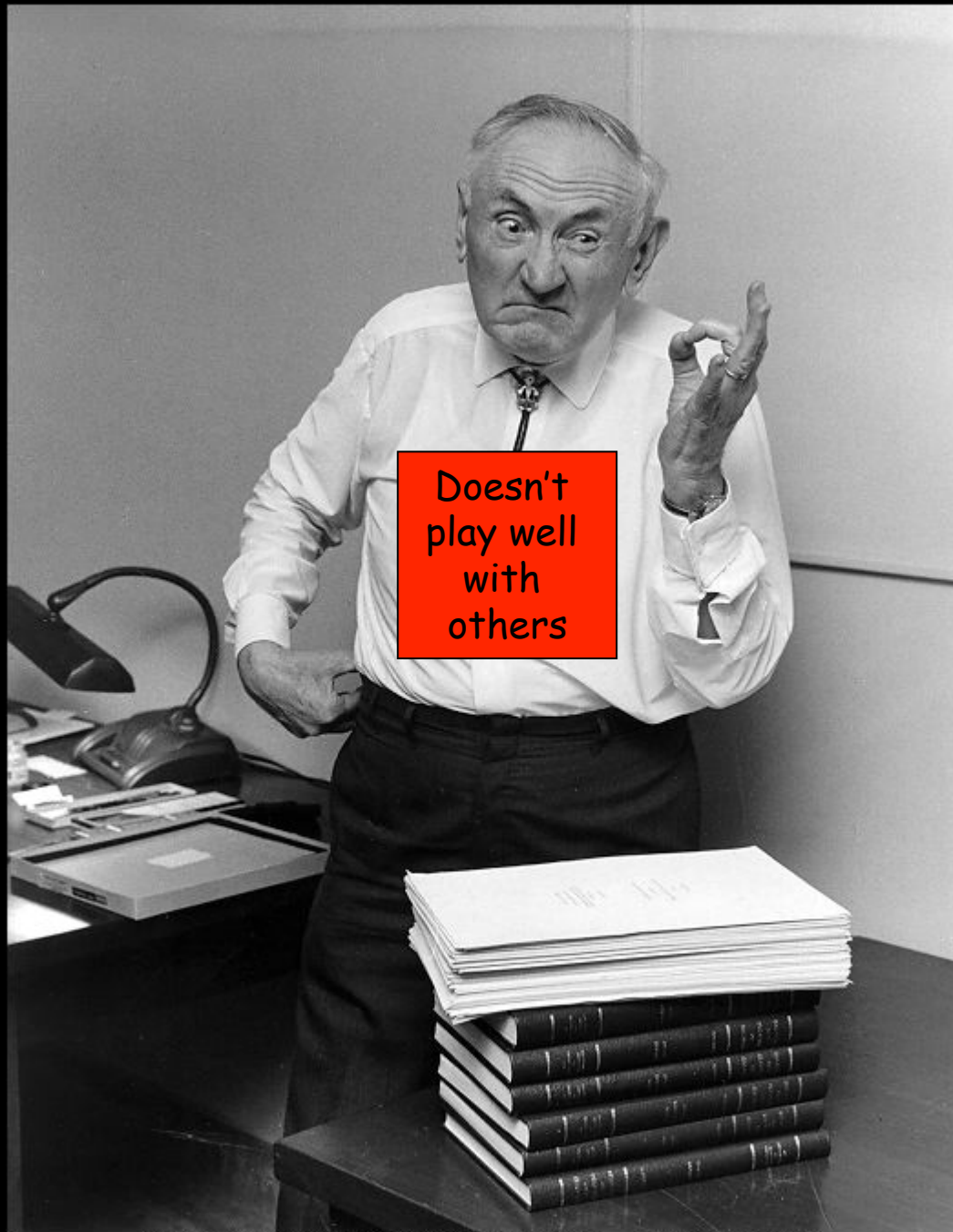






**The Gravity of the Stars is not  
Enough to Hold Clusters  
Together**

**Zwicky: Clusters Must be  
Held Together by the Gravity  
of Unseen “Dark Matter”**

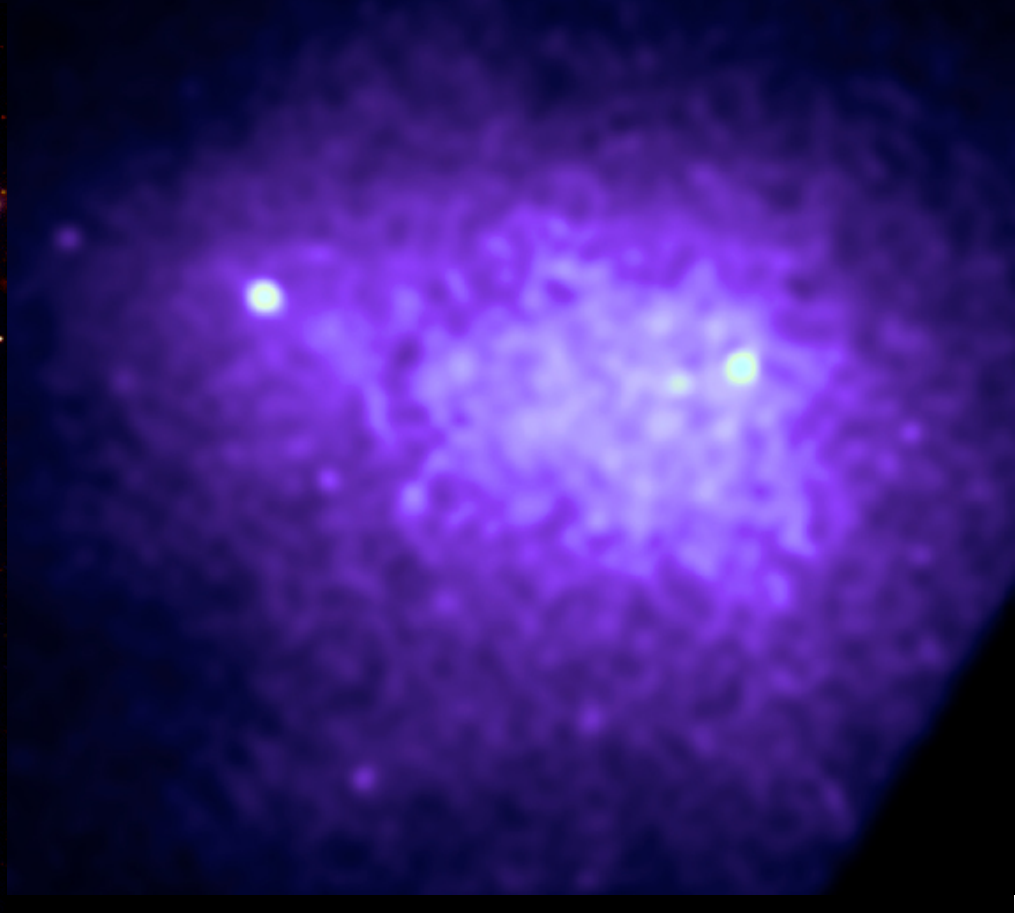
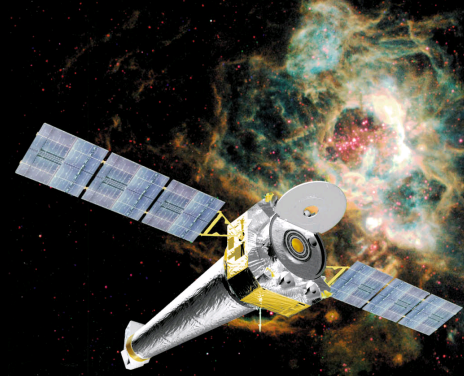


Doesn't  
play well  
with  
others

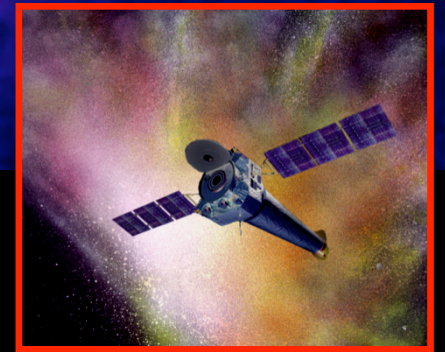
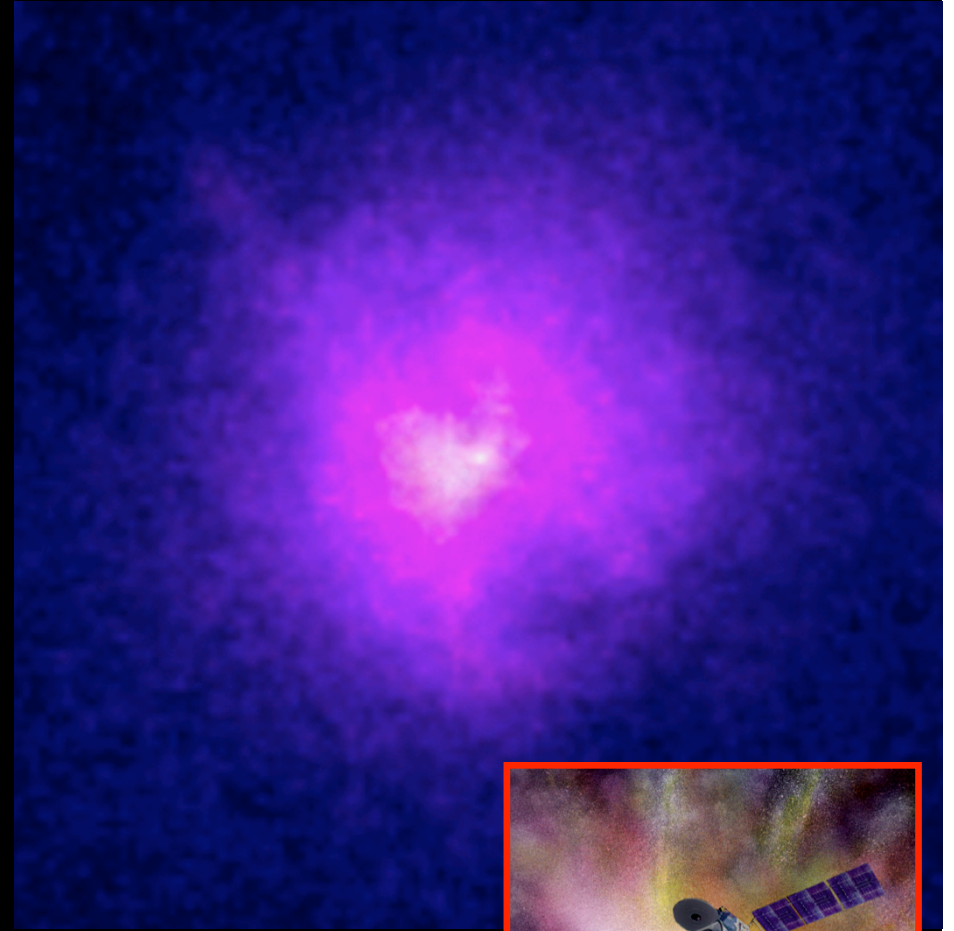
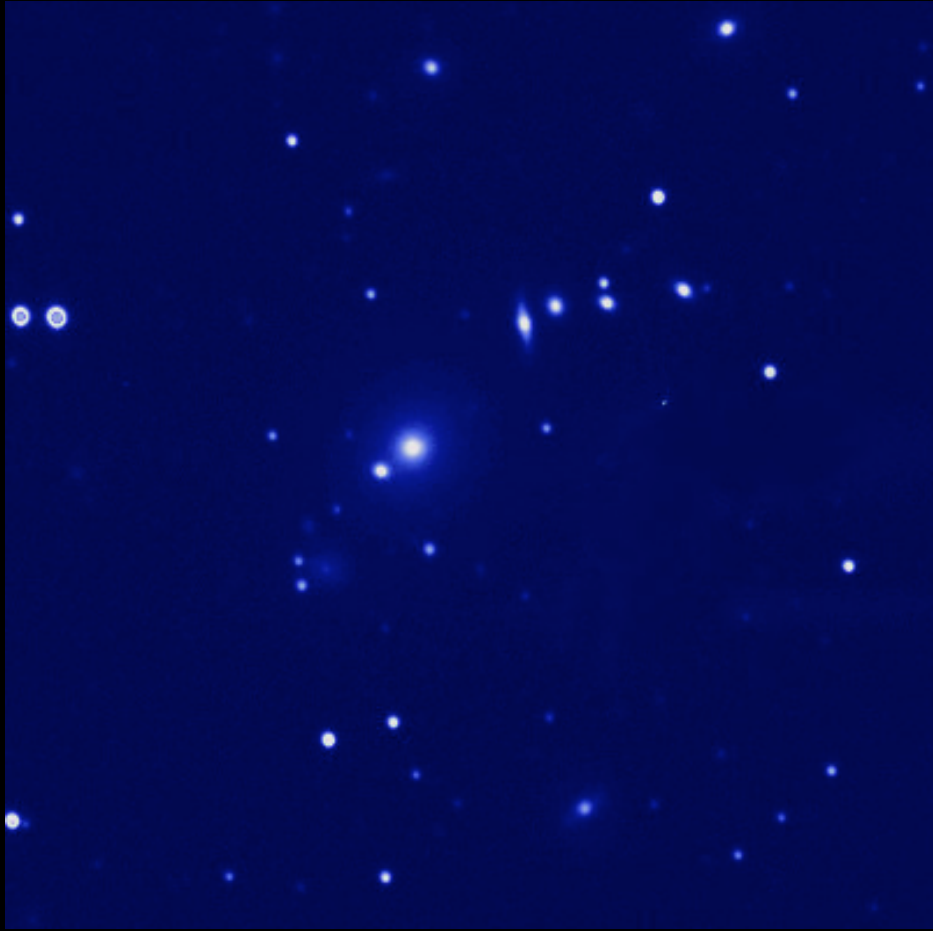
© Copyright California Institute of Technology. All rights reserved.  
Commercial use or modification of this material is prohibited.



# COMA in X-Ray



# More than Meets the Eye



... but not enough to account for the dark matter

**Lots of Hot, X-ray Gas**

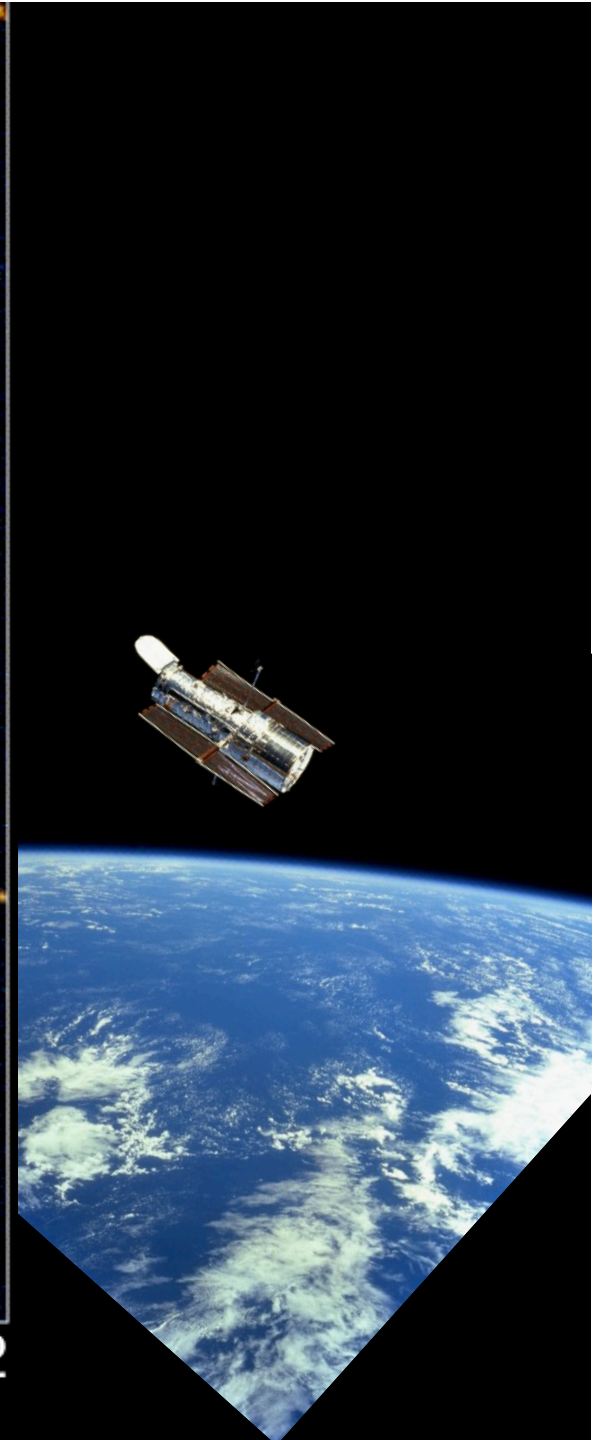
**Accounts for Most of the  
Atoms in Clusters**

**... But a Factor of 6 Short of  
Accounting for the Dark Matter**

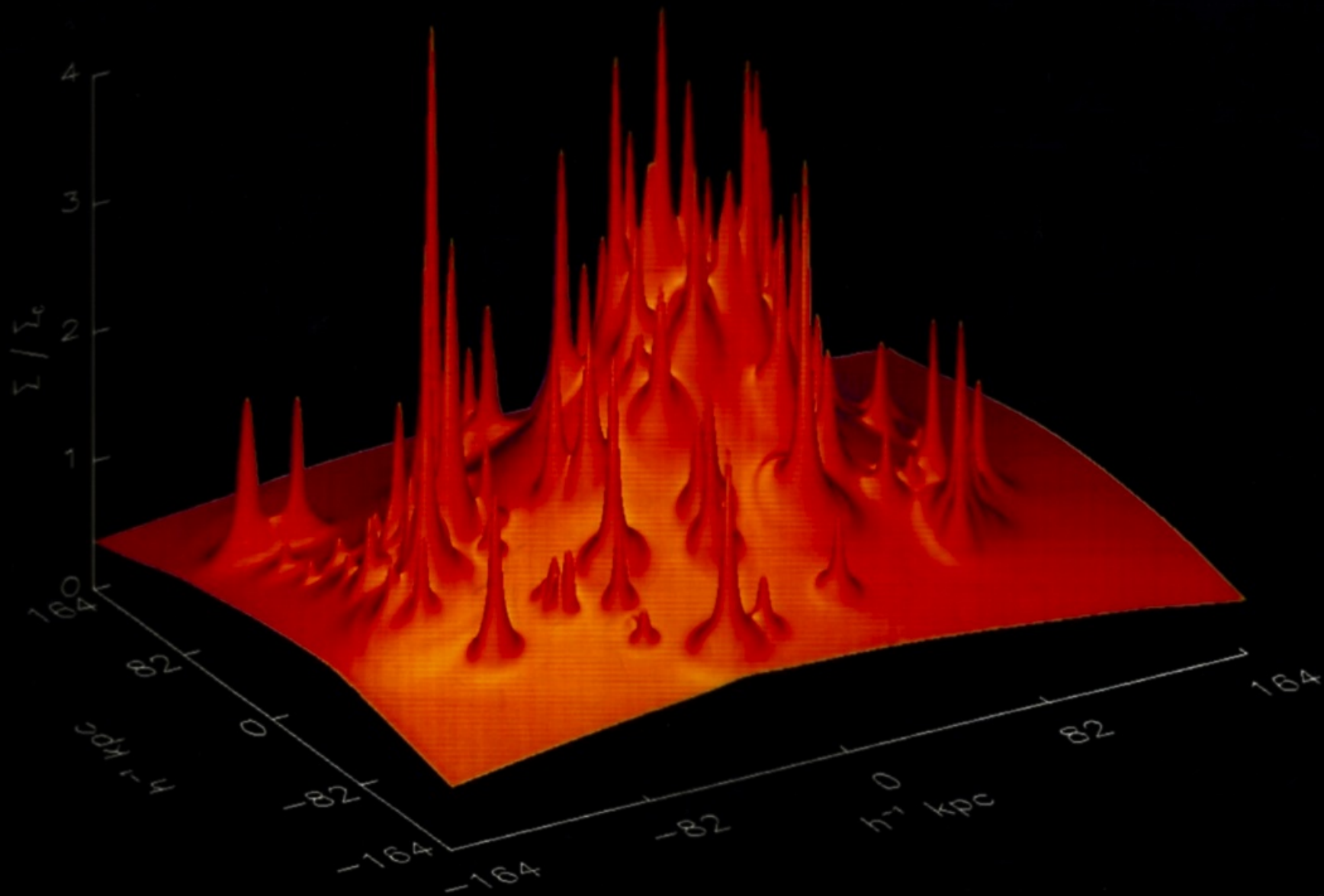


**Gravitational Lens**  
**Galaxy Cluster 0024+1654**

HST · WFPC2



# PROJECTED MASS DENSITY: CLOO24



# The Bullet Cluster

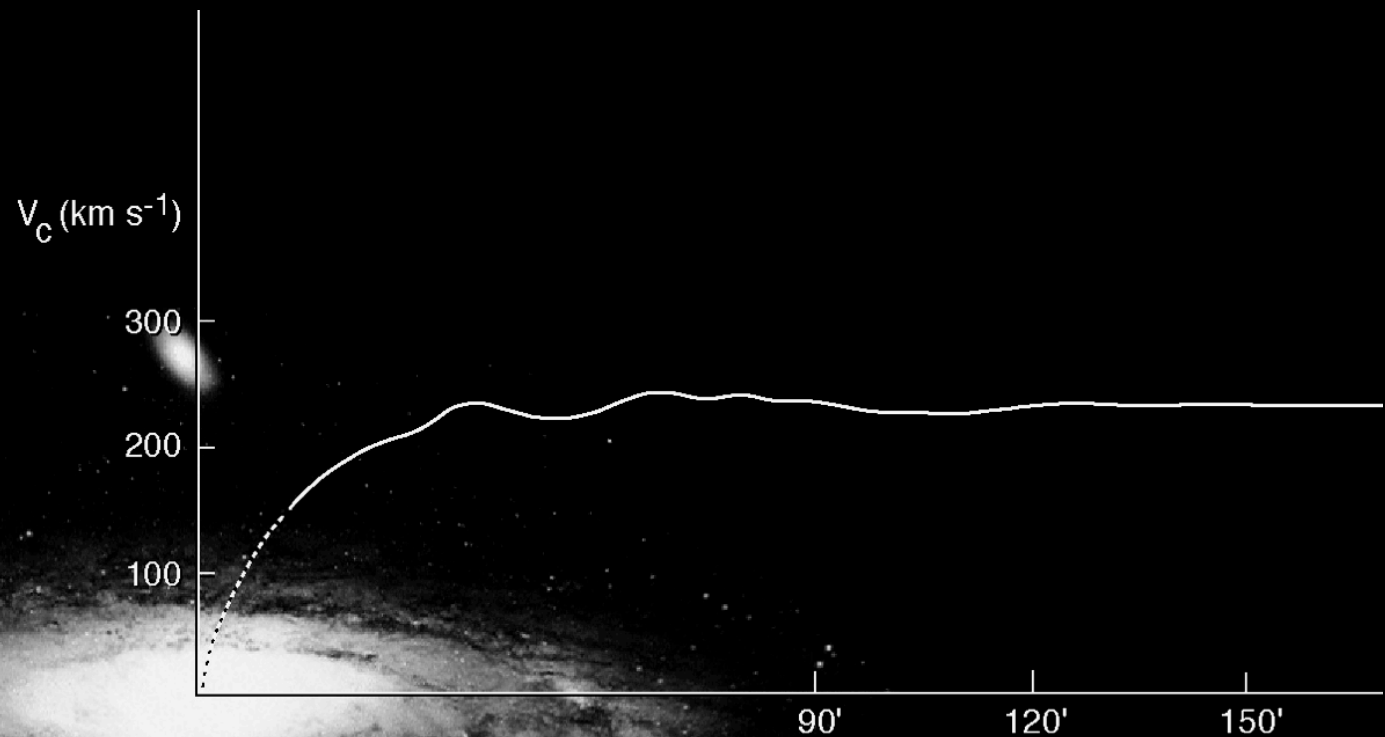


DARK MATTER

Most of the universe can't even be bothered to interact with you.

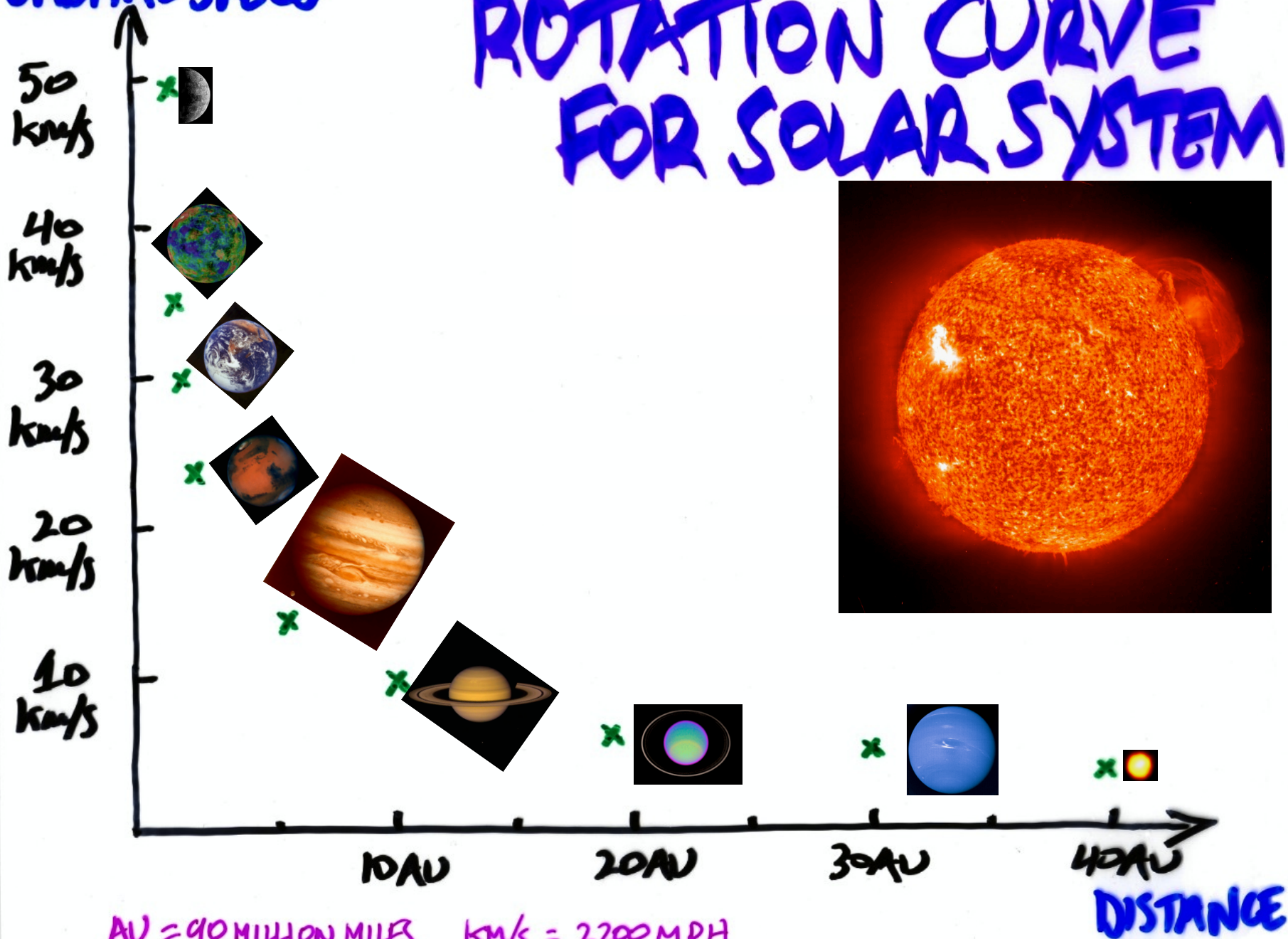
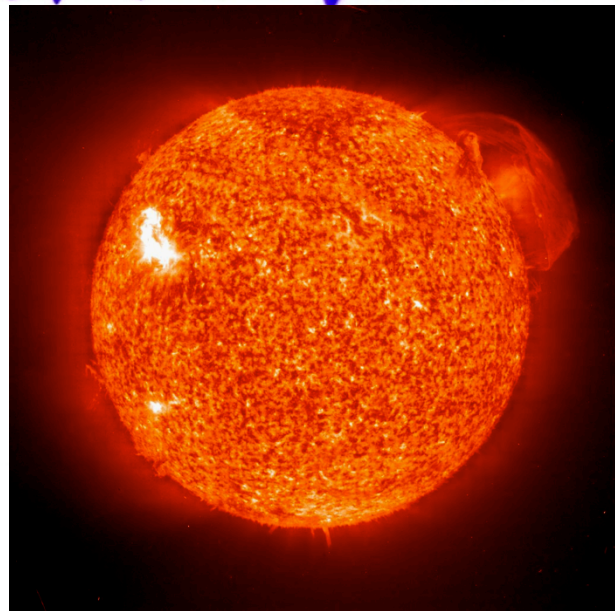
# Vera Rubin and Flat Rotation Curves

## Dark Matter Close to Home



# ORBITAL SPEED

# ROTATION CURVE FOR SOLAR SYSTEM

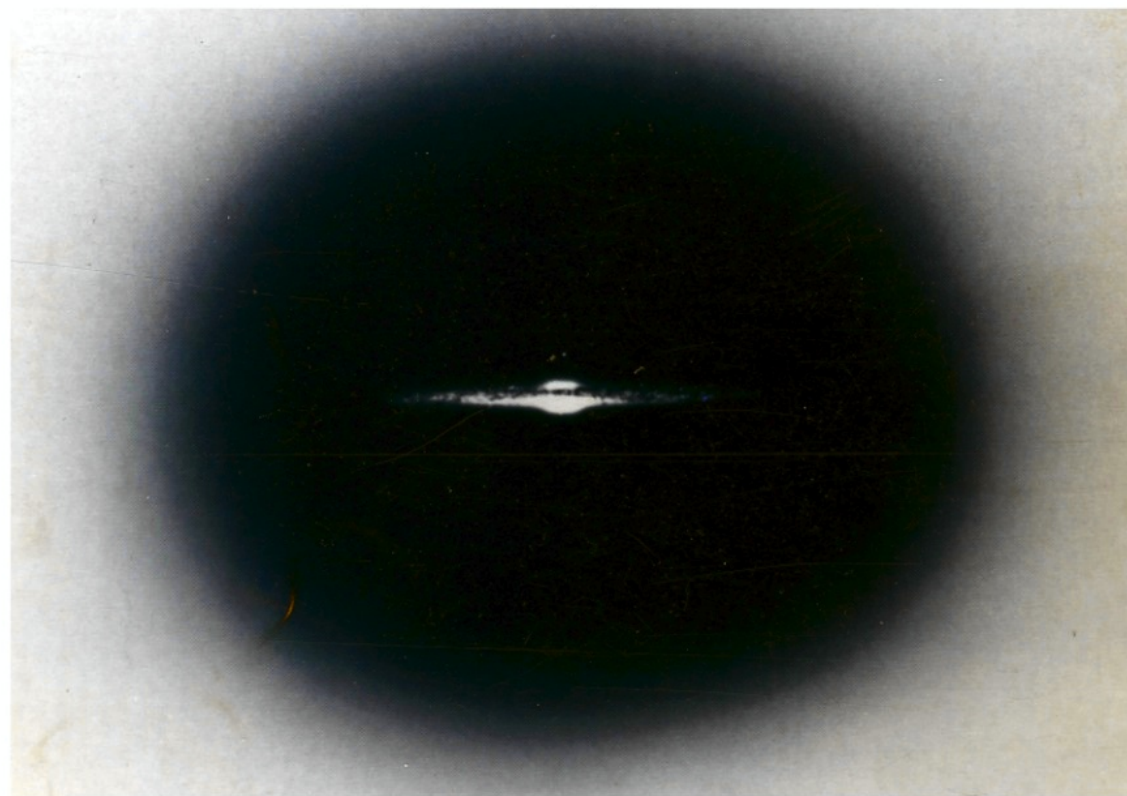


AU = 90 MILLION MILES    km/s = 2200 MPH

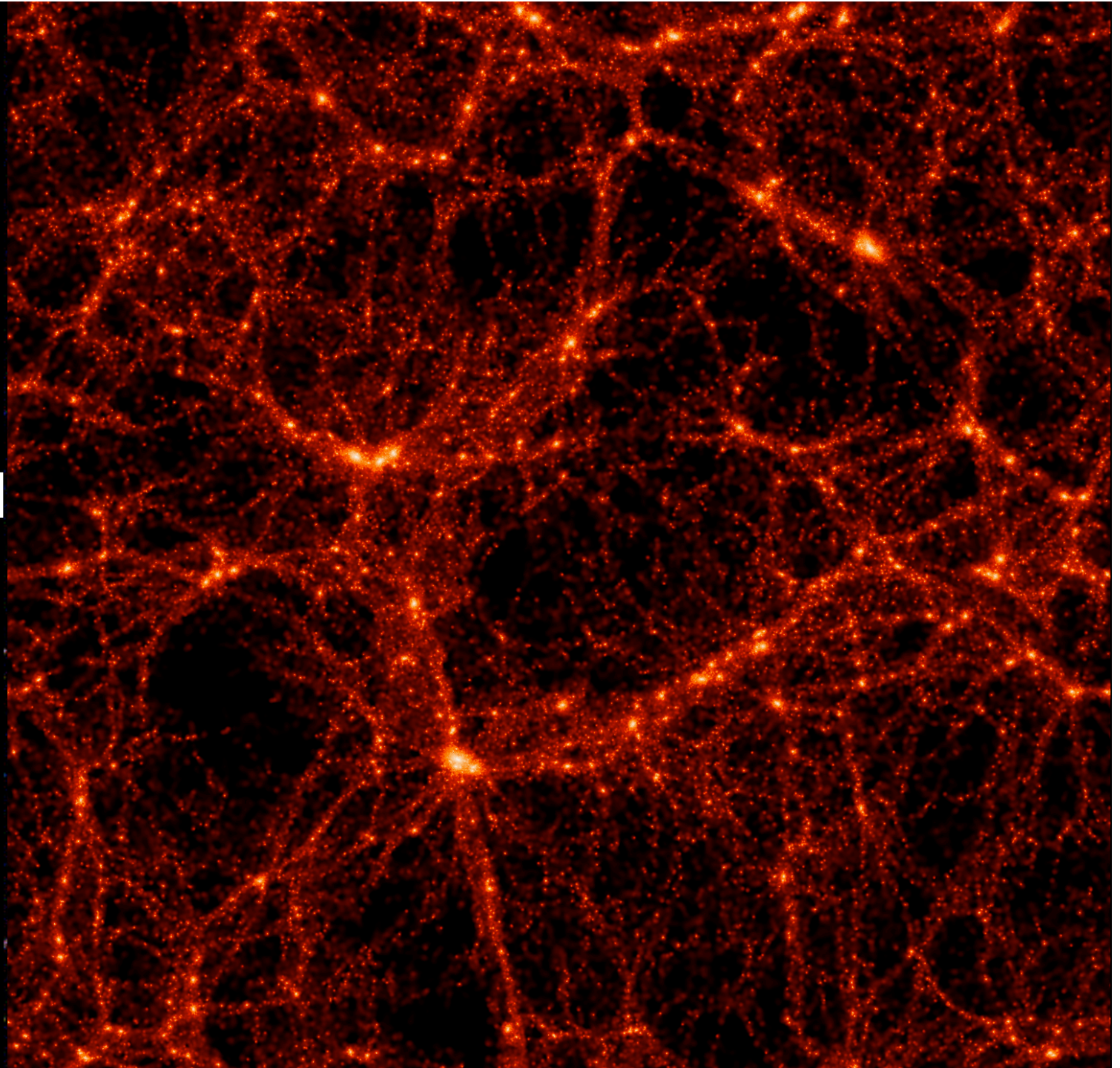
DISTANCE



LOTS OF DARK  
MATTER-RIGHT  
HERE!



**Cosmic  
Web of  
Dark  
Matter  
Decorated  
by Stars**



# So What is It?

- Black Holes? no
- White Dwarfs? no
- Green House Gas? no
  - Dust? no
- None of the above!

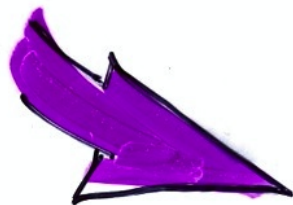
NOT ENOUGH  
ORDINARY MATTER

4%  
OF CRITICAL

TO ACCOUNT FOR

THE AMOUNT OF  
DARK MATTER

33%  
OF CRITICAL



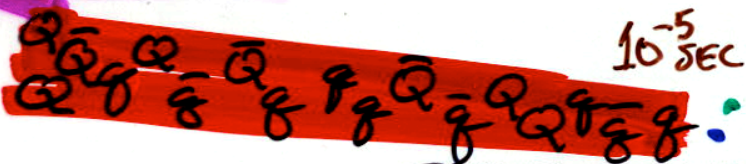
DARK MATTER  
IS A NEW FORM OF  
MATTER! "COLD DARK MATTER"

Particles left  
over from  
the Quark  
Soup phase  
of cosmic  
evolution



# ORDINARY MATTER: FROM QUARKS TO US

**INFLATION  
BARYOGENESIS**



TRANSITION FROM  
QUARKS  $\rightarrow$  NEUTRONS, PROTONS



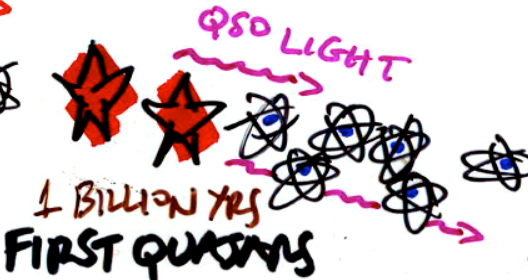
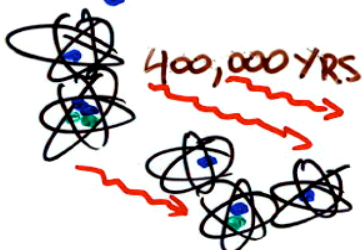
**BIG-BANG  
NUCLEOSYNTHESIS**  
Formation of H, D,  
He, He-3, Li

**BBN**

$D/H = (3 \pm 0.2) \times 10^{-5}$

$\Omega_B = 0.04 \pm 0.002$

**FORMATION OF ATOMS**  
COSMIC MICROWAVE  
BACKGROUND



**INTERGALACTIC GAS**

ABSORPTION OF  
QUASAR LIGHT  
BY HYDROGEN

$\Omega_B \geq 0.04$

HERE & NOW  
14 Billion YRS  
stars, gas,  
dust, ...

**CMB**

RATIO OF FIRST-TO-  
SECOND PEAKS: 2/1



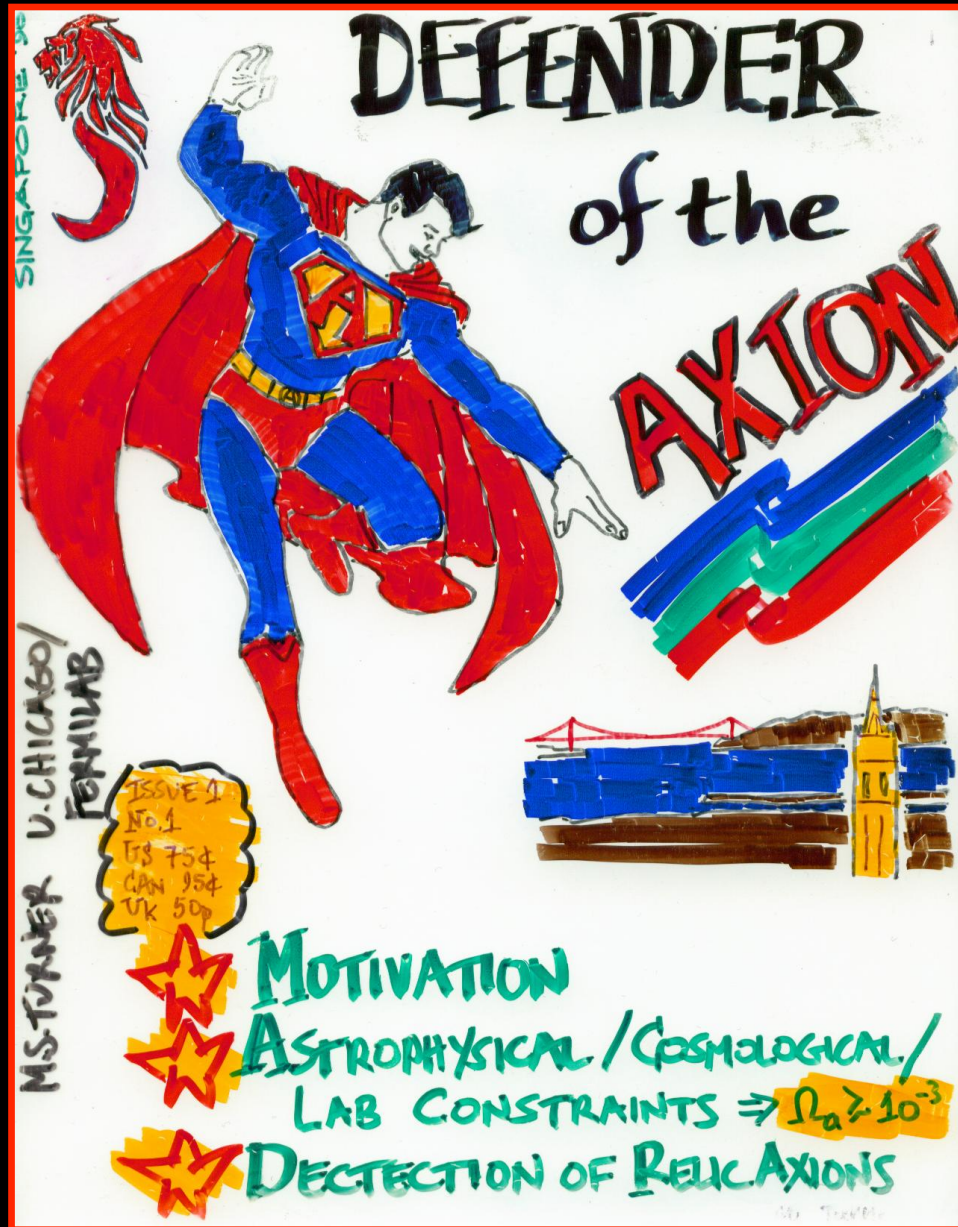
$\Omega_B = 0.045 \pm 0.008$

# OF MOOSE DIAGRAM DARK MATTER CANDIDATES

MT90



# The Axion is My Favorite!





**... and we now know that neutrinos  
are a (small) part of the dark matter  
(few tenths of a percent)**

**Its time to indentify the rest!**



DESPERATELY  
SEEKING

DARK MATTER

In the sky, on the ground and underground

# HIGGS BOSON

*H*ory

# DARK MATTER

?



●●●●●●●●  
LIGHT



●●●●  
LIGHT



**DARK MATTER** is the name given to material in the Universe

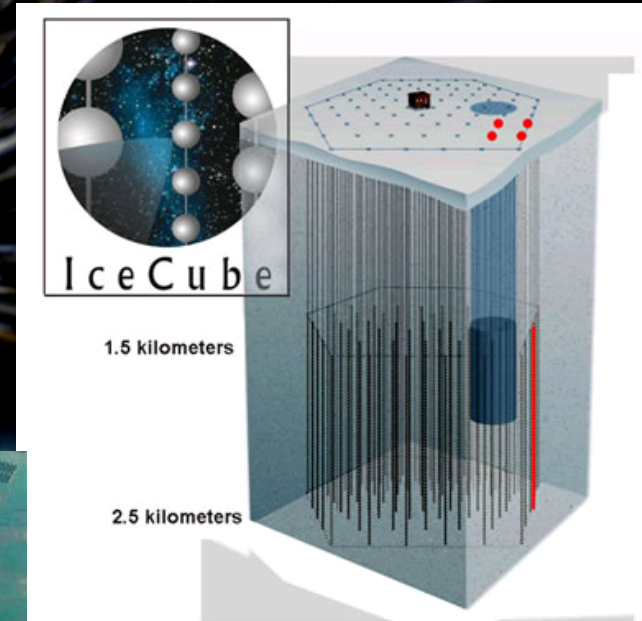
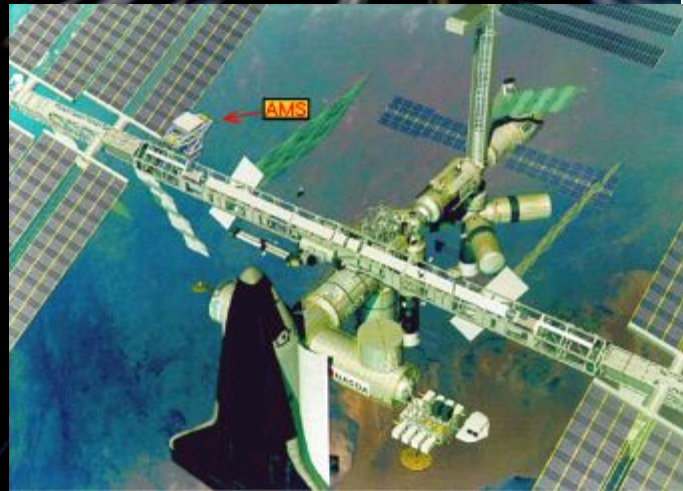
GLUON PHOTON NEUTRINO TAU QUARK PROTON NEUTRON DOWN QUARK TAU GLUON  
NEUTRON DOWN QUARK TAU NEUTRINO MUON UP QUARK PROTON NEUTRON  
NEUTRINO MUON UP QUARK NEUTRINO MUON UP QUARK DOWN QUARK TAU NEUTRINO  
UP QUARK PROTON NEUTRON DOWN QUARK TAU GLUON PHOTON NEUTRINO TACHYON ELECTRON UP  
DOWN QUARK TAU GLUON PHOTON NEUTRINO TACHYON ELECTRON UP  
UP QUARK PROTON NEUTRON DOWN QUARK TAU GLUON PHOTON NEUTRINO TACHYON ELECTRON UP

The **PARTICLE ZOO**

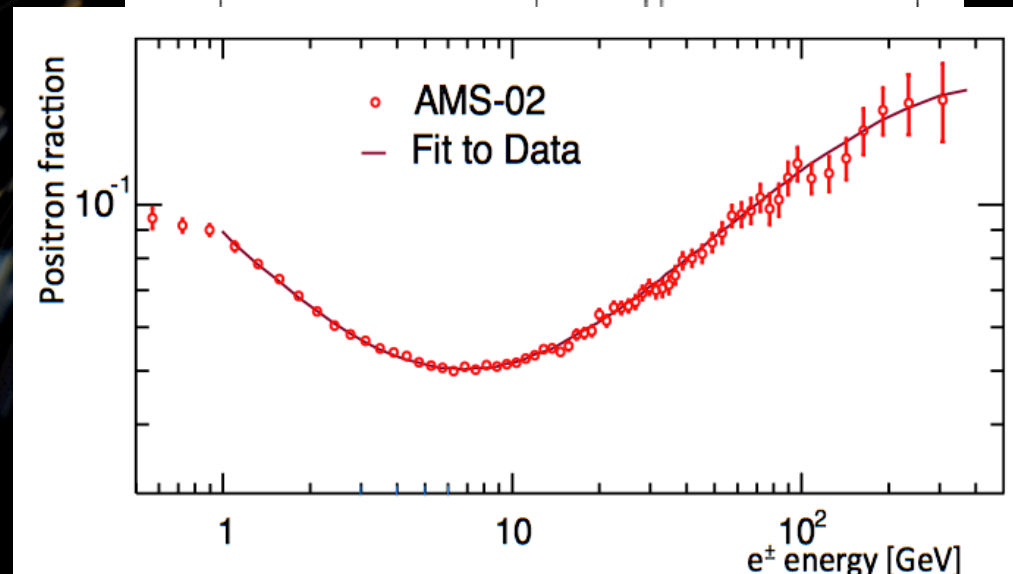
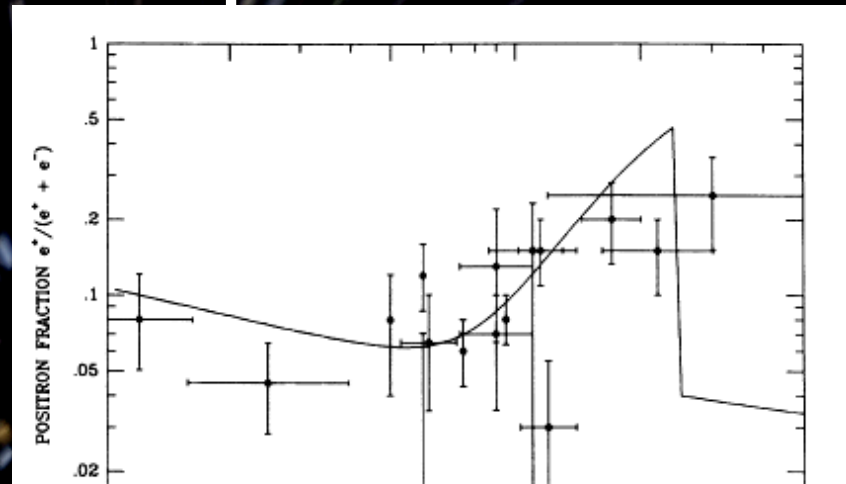
# Soudan Mine, MN Dark Matter Search



# Dark Matter annihilating in our halo produces positrons, neutrinos and gamma rays



# AMS: Dark Matter annihilating into electrons and positrons?



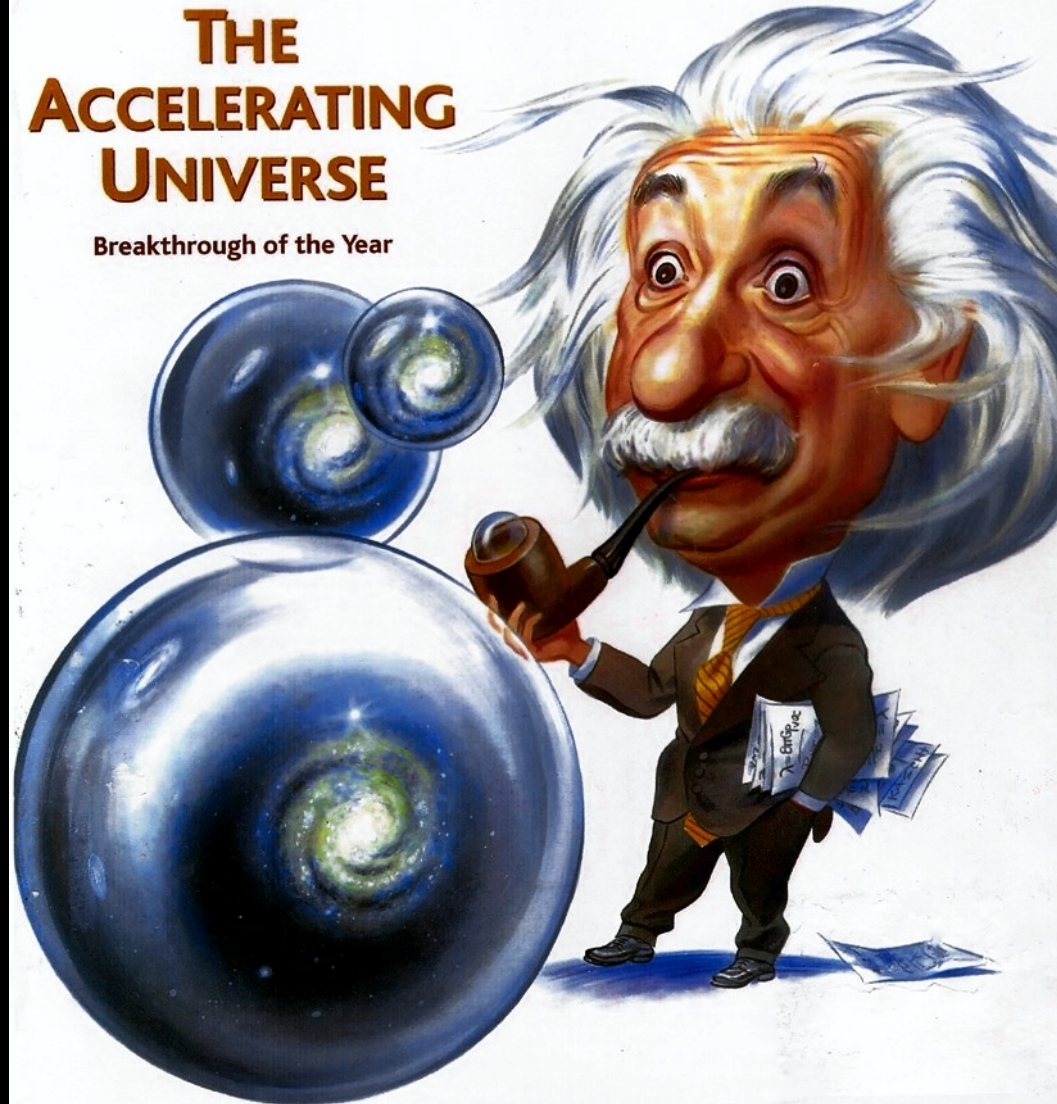
# Science

18 December 1998

Vol. 282 No. 5397  
Pages 2141-2336 \$7

## THE ACCELERATING UNIVERSE

Breakthrough of the Year



AMERICAN ASSOCIATION FOR THE ADVANCEMENT OF SCIENCE

# Discovery!



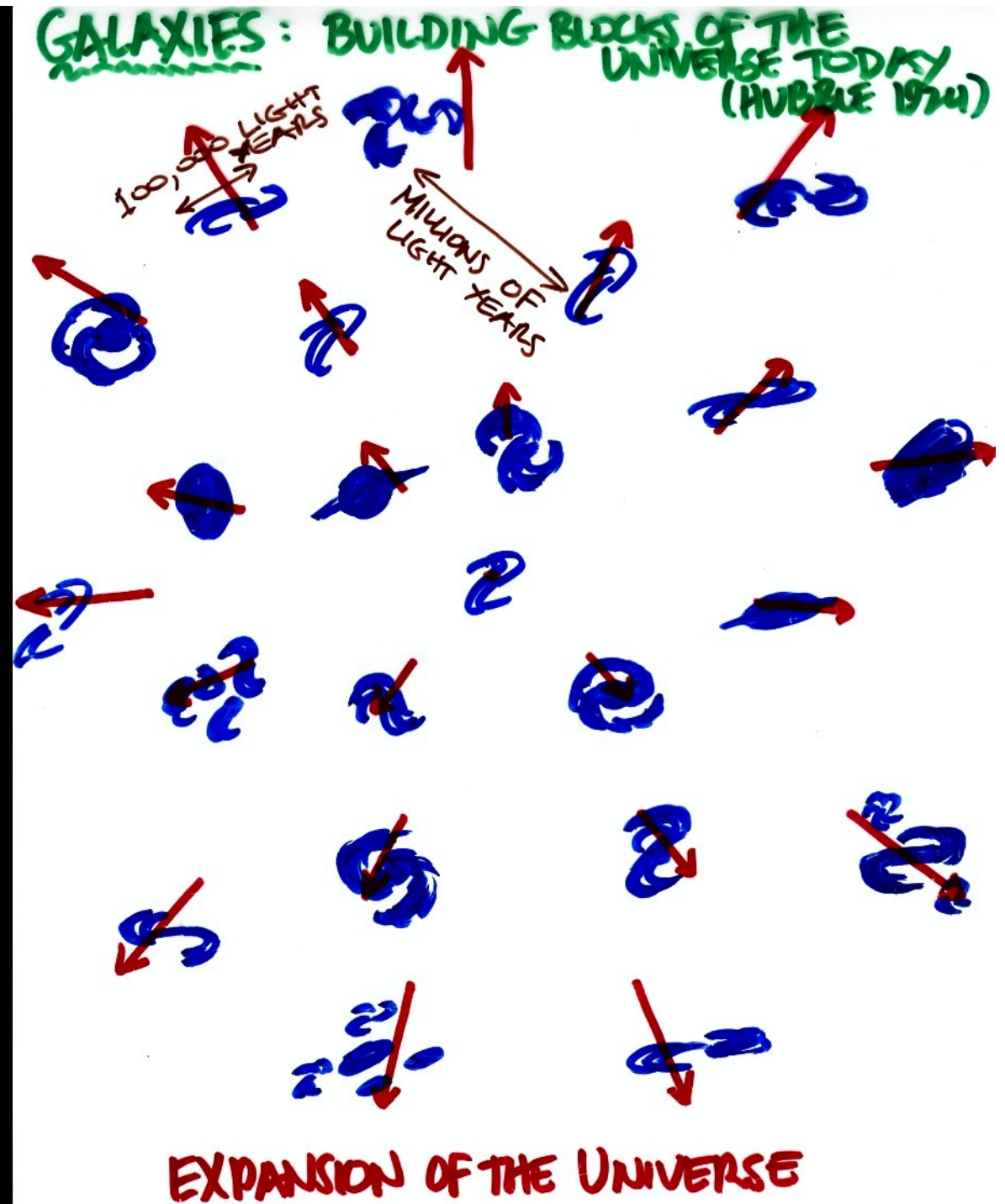
**Hi z Supernova Team**



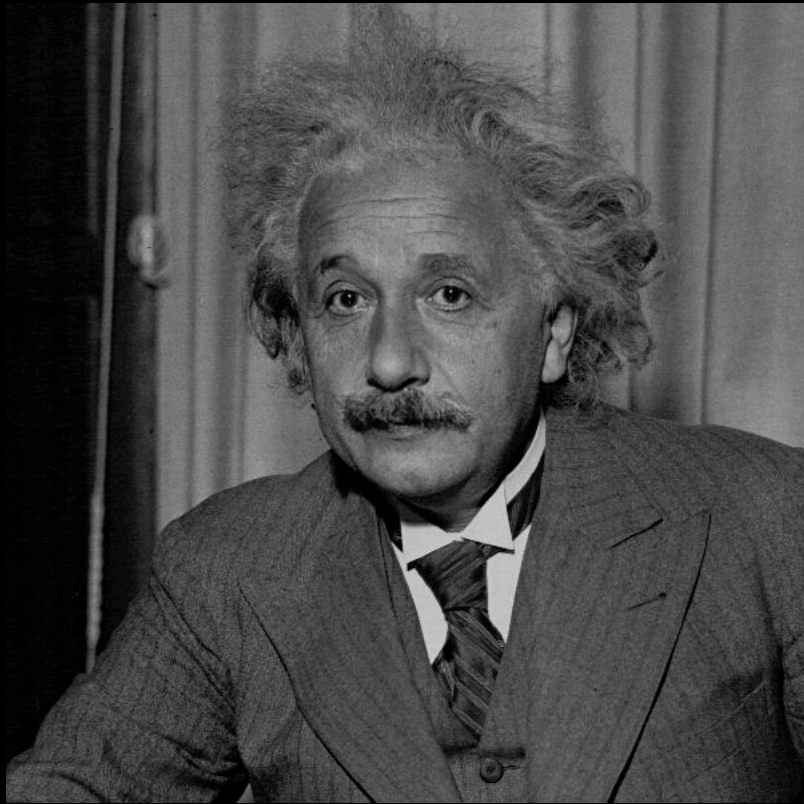
**Supernova Cosmology Project**



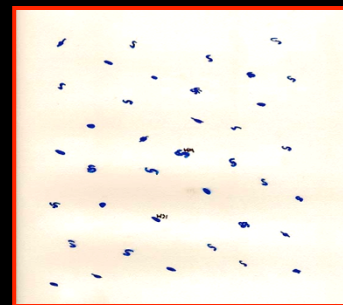
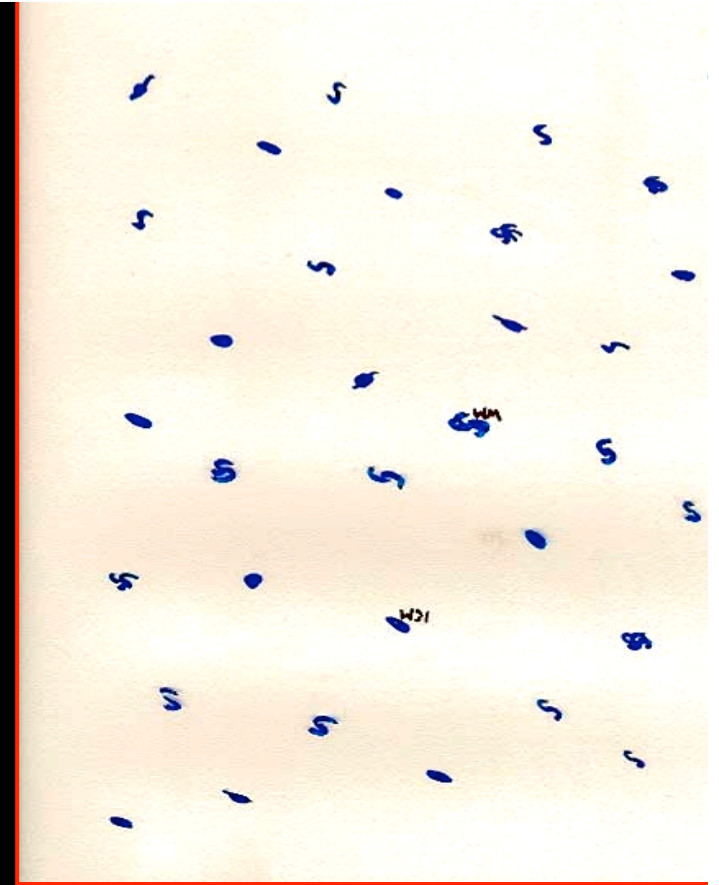
The  
Universe  
is expanding  
and had a  
beginning  
... Hubble, 1929

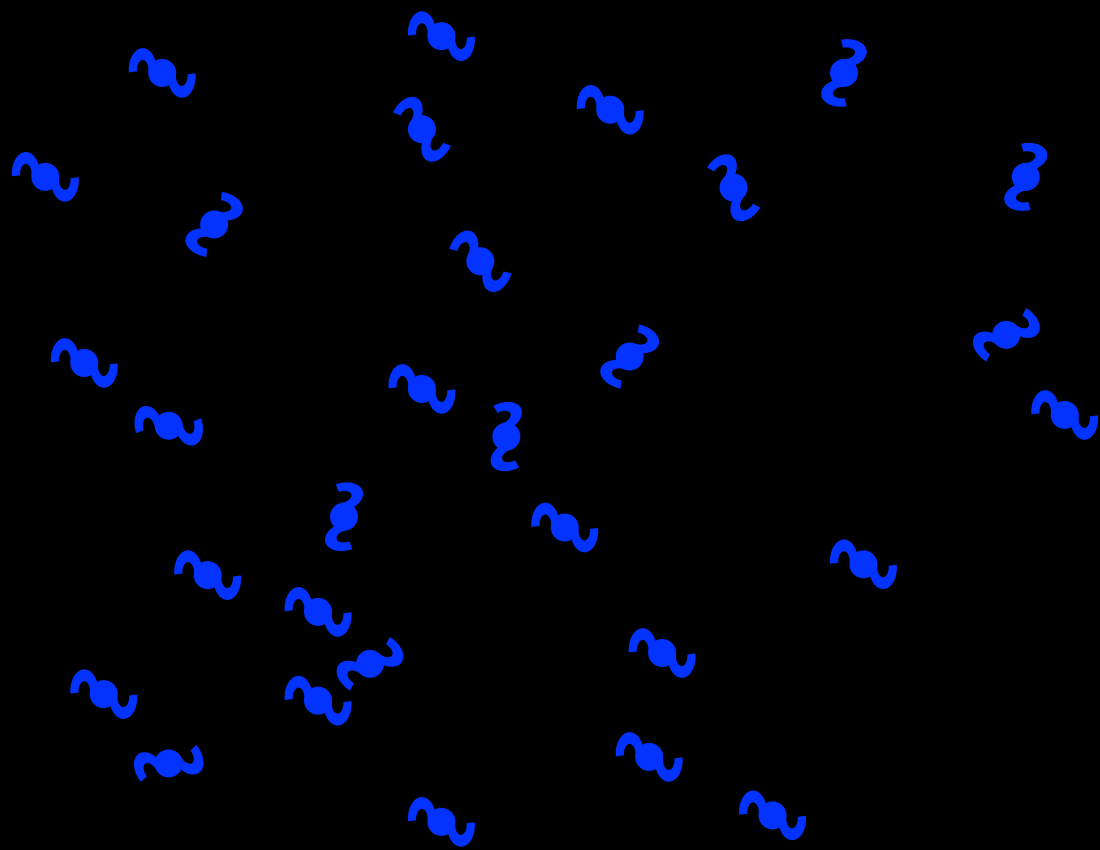


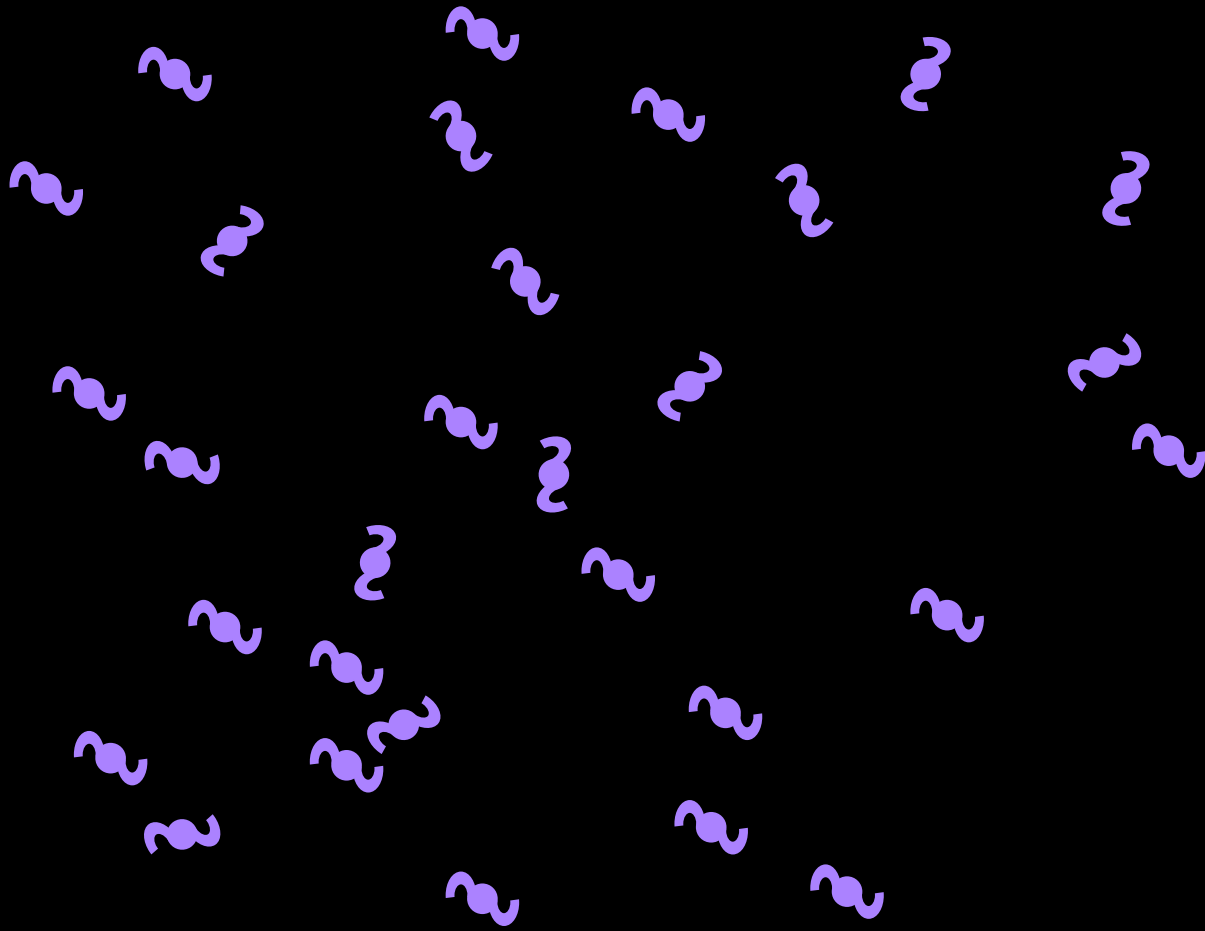
Not an explosion into  
space but  
An Explosion of Space  
(galaxies carried along)

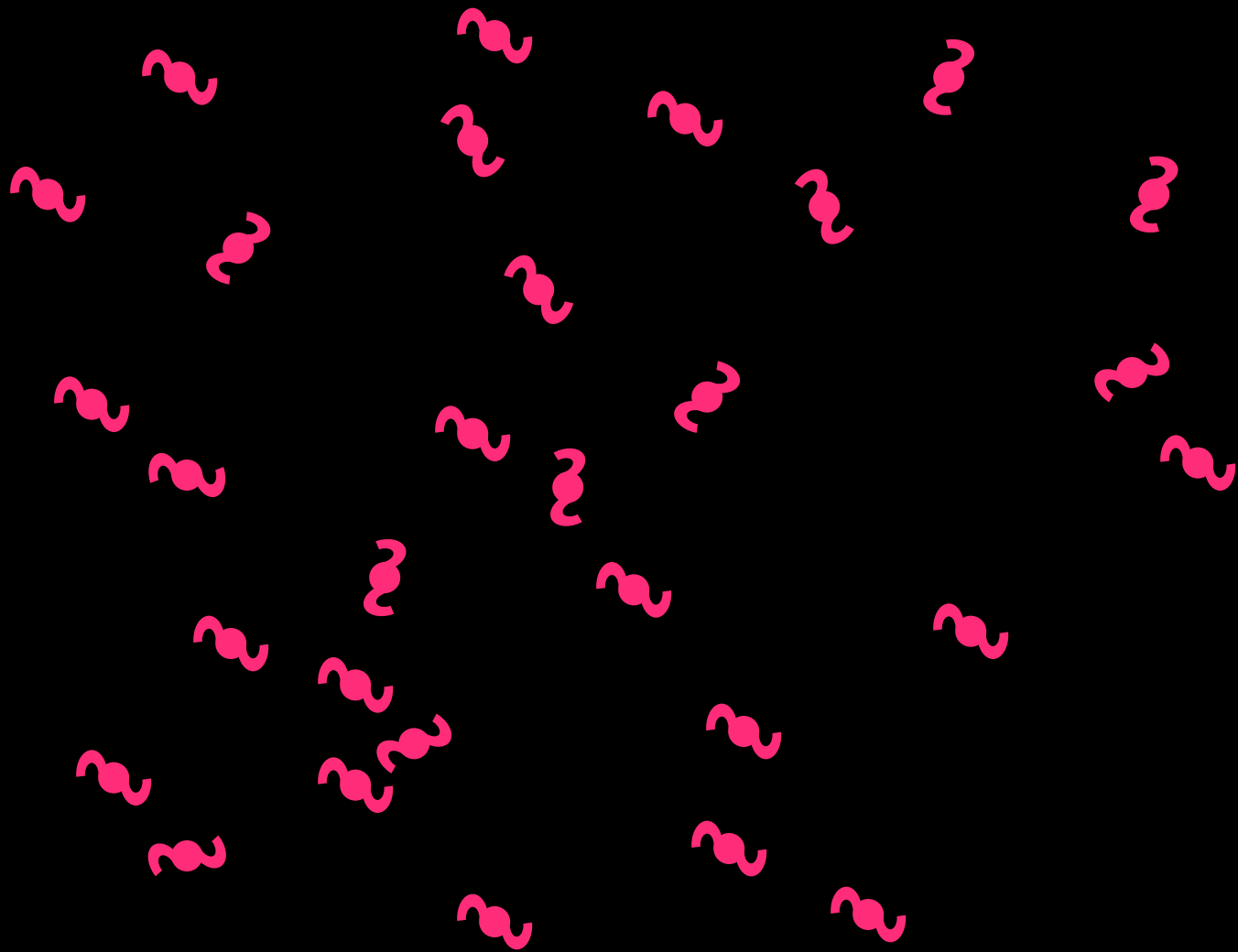


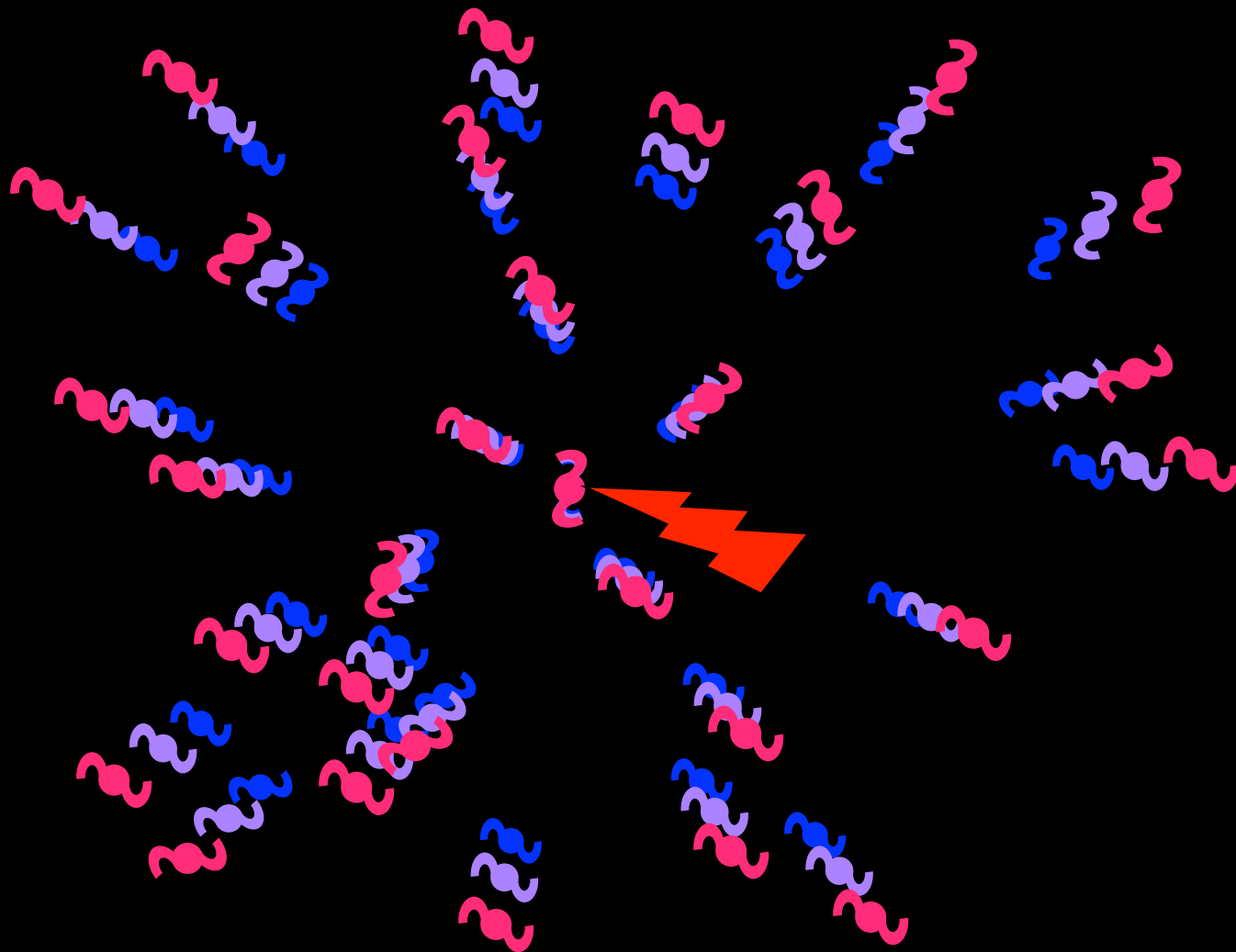
Time warps, space stretches and  
God plays dice!

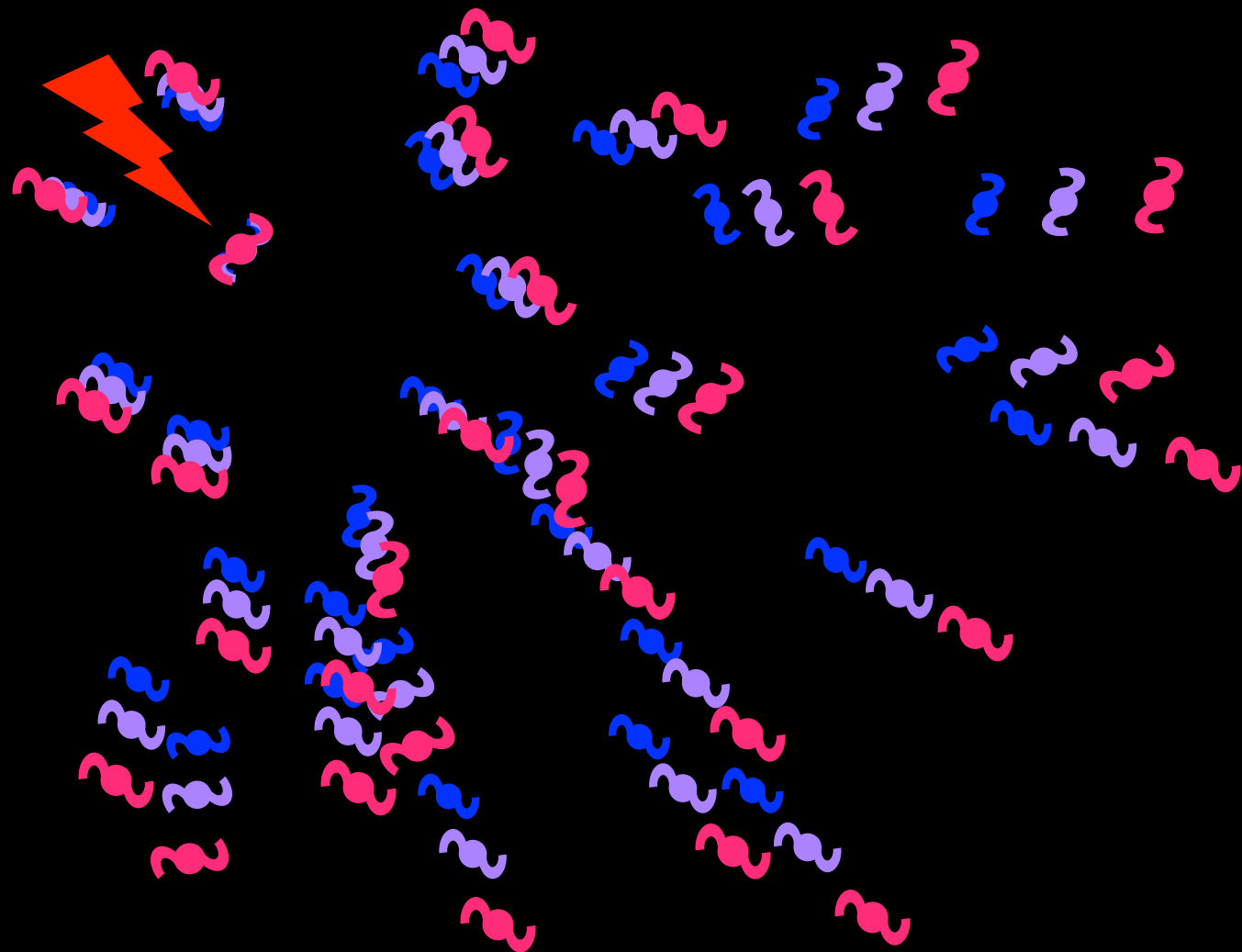


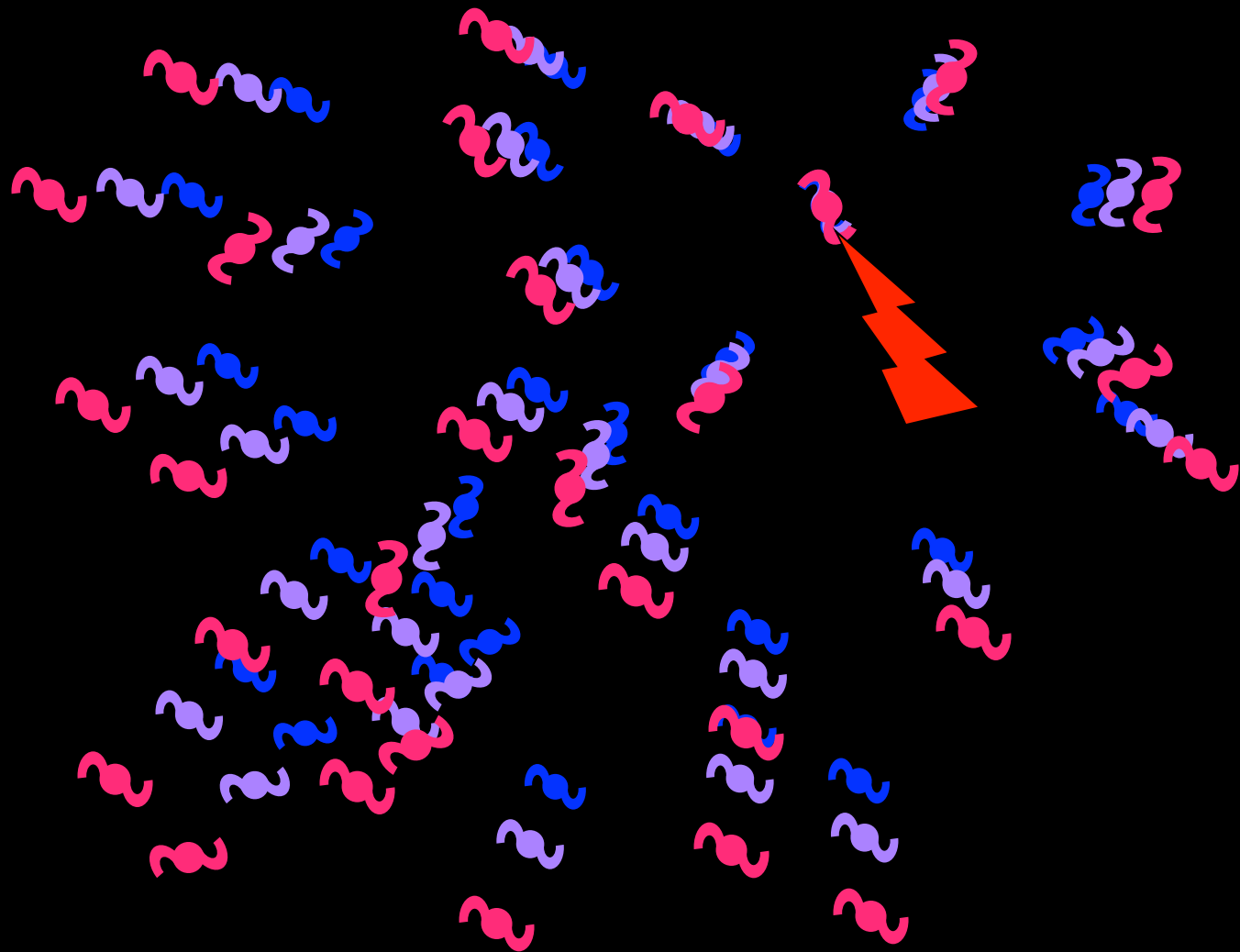








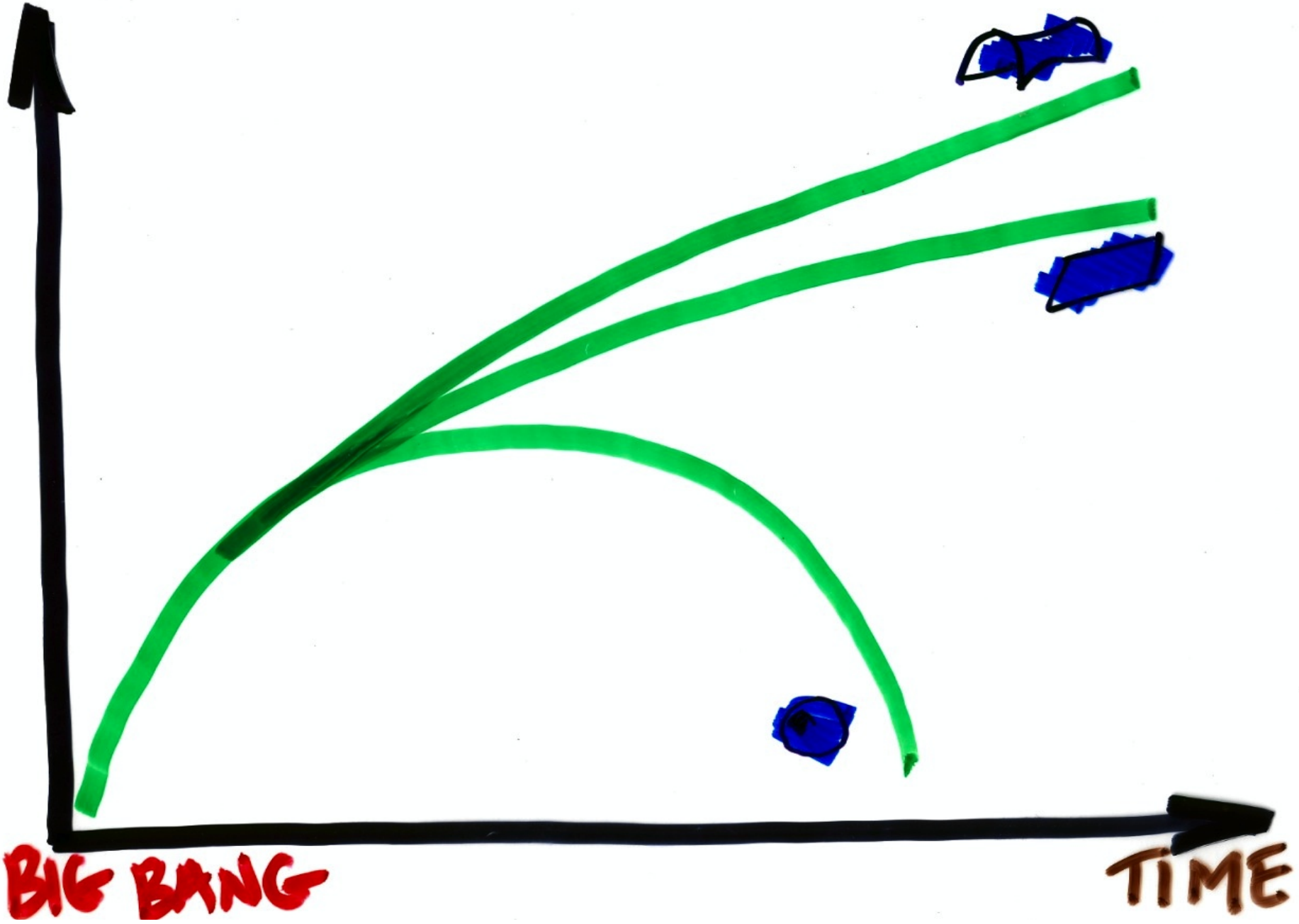






**No Center**  
**Different Perspectives**  
**One Scale Factor**

SIZE



BIG BANG

TIME

# IS THE UNIVERSE SLOWING DOWN?

VELOCITY OF GALAXY

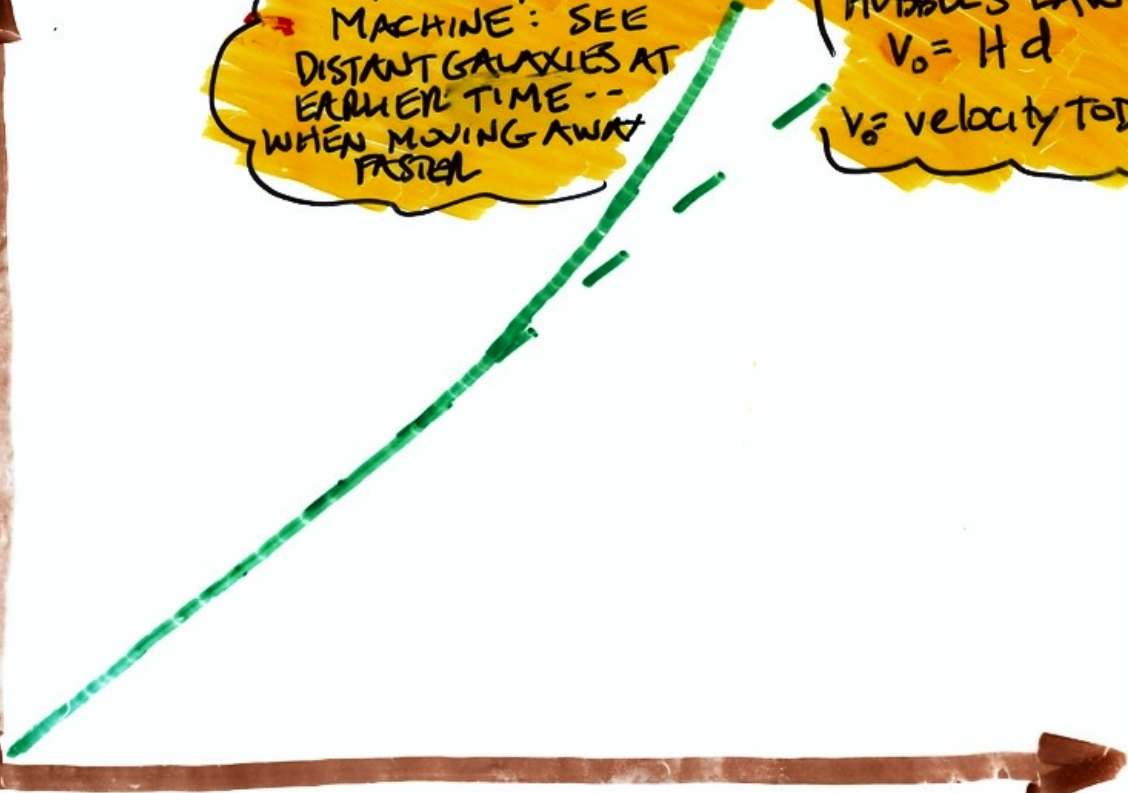


TELESCOPE = TIME  
MACHINE: SEE  
DISTANT GALAXIES AT  
EARLIER TIME --  
WHEN MOVING AWAY  
FASTER

HUBBLE'S LAW  
 $v_0 = H d$

$v_0$  = velocity TODAY

DISTANCE TO GALAXY



# **Standard Candle To Measure Cosmic Distances**

**Type Ia Supernova:**

**1.4 Solar Mass  
Thermonuclear  
Bomb – Rare, But  
Easy to See Across  
The Cosmos and**



The image cannot be displayed. Your computer may not have enough memory to open the image, or the image may have been corrupted. Restart your computer, and then open the file again. If the red x still appears, you may have to delete the image and then insert it again.



The image cannot be displayed. Your computer may not have enough memory to open the image, or the image may have been corrupted. Restart your computer, and then open the file again. If the red x still appears, you may have to delete the image and then insert it again.

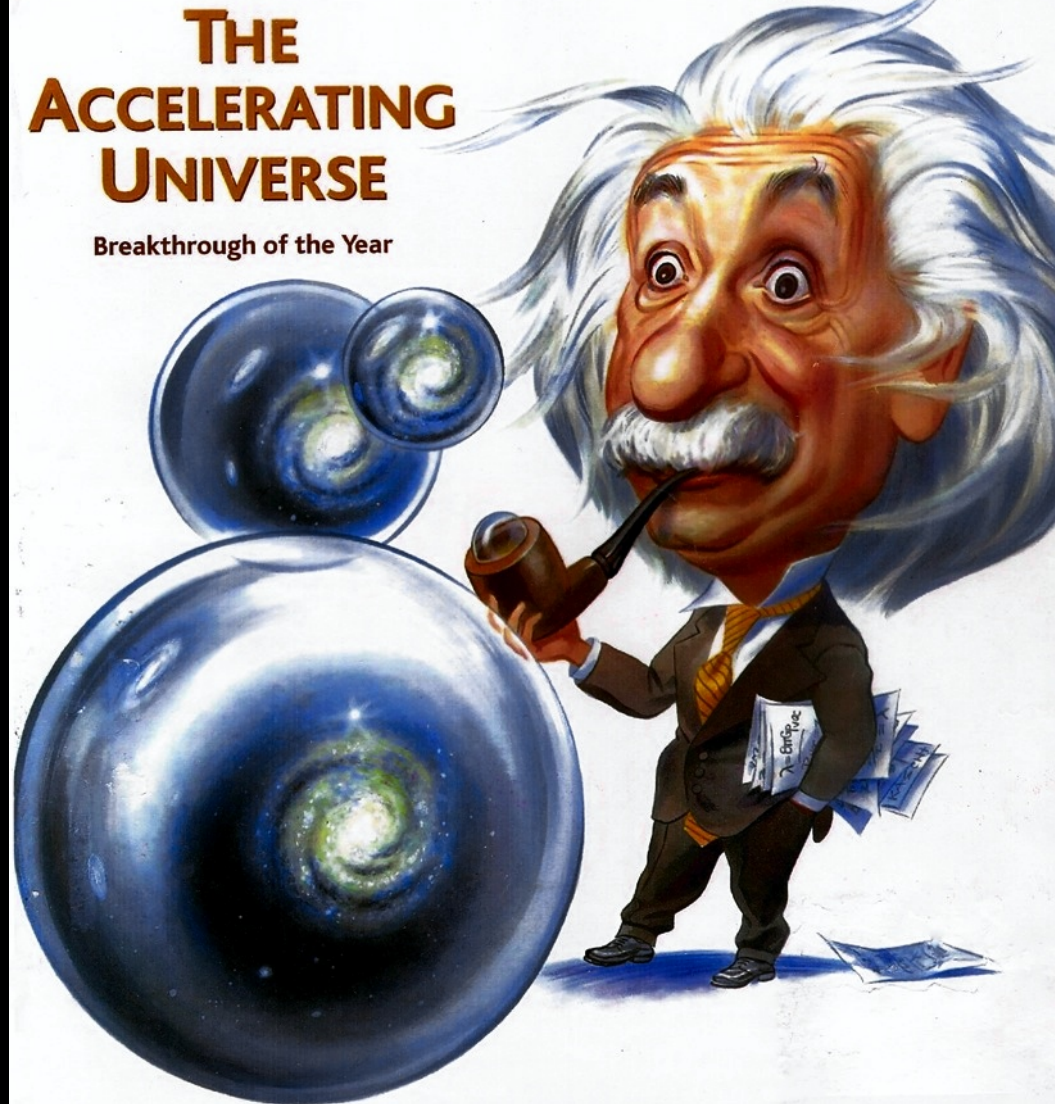
# Science

18 December 1998

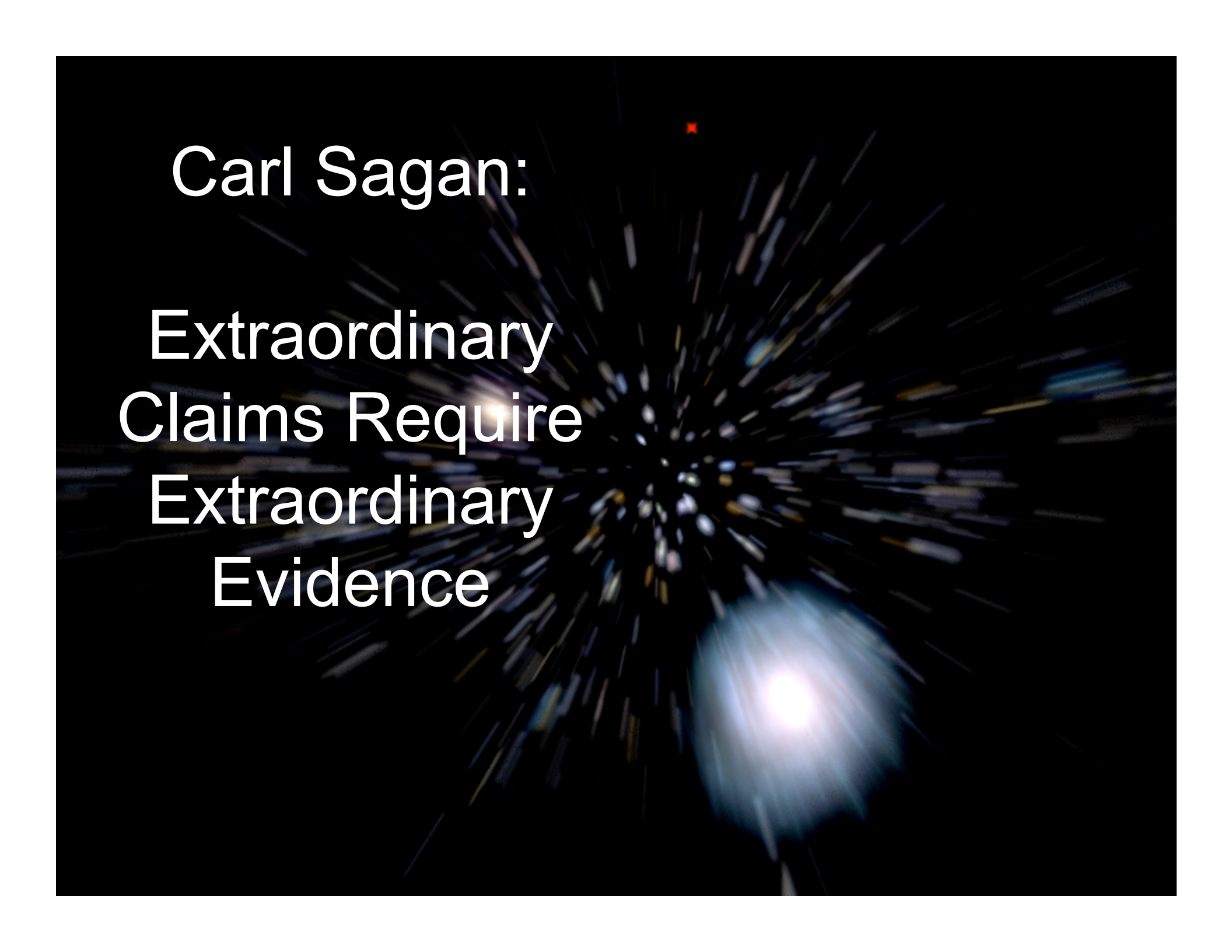
Vol. 282 No. 5397  
Pages 2141-2336 \$7

## THE ACCELERATING UNIVERSE

Breakthrough of the Year



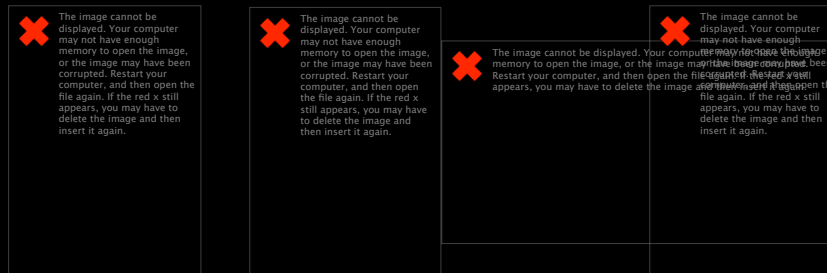
AMERICAN ASSOCIATION FOR THE ADVANCEMENT OF SCIENCE



Carl Sagan:  
Extraordinary  
Claims Require  
Extraordinary  
Evidence

# The evidence for cosmic acceleration has gotten stronger

... no doubt that the expansion of the Universe is speeding up



2011: Certified by Stockholm!



# Cosmic Microwave Background: Independent Line of Evidence

✘ The image cannot be displayed. Your computer may not have enough memory to open the image, or the image may have been corrupted. Restart your computer, and then open the file again. If the red x still appears, you may have to delete the image and then insert it again.

✘ The image cannot be displayed. Your computer may not have enough memory to open the image, or the image may have been corrupted. Restart your computer, and then open the file again. If the red x still appears, you may have to delete the image and then insert it again.


✘

WMAP

✘ The image cannot be displayed. Your computer may not have enough memory to open the image, or the image may have been corrupted. Restart your computer, and then open the file again. If the red x still appears, you may have to delete the image and then insert it again.

BOOMERanG

✘ The image cannot be displayed. Your computer may not have enough memory to open the image, or the image may have been corrupted. Restart your computer, and then open the file again. If the red x still appears, you may have to delete the image and then insert it again.

 The image cannot be displayed. Your computer may not have enough memory to open the image, or the image may have been corrupted. Restart your computer, and then open the file again. If the red x still appears, you may have to delete the image and then insert it again.



The image cannot be displayed. Your computer may not have enough memory to open the image, or the image may have been corrupted. Restart your computer, and then open the file again. If the red x still appears, you may have to delete the image and then insert it again.

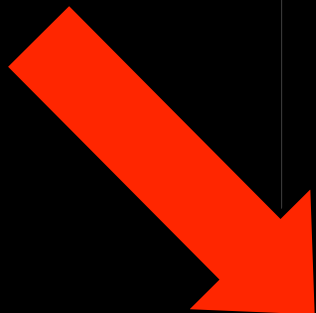
**Accounting  
only works  
with dark  
energy:**

$$\begin{aligned} &4\% + 25\% \\ &+70\% \text{ (DE)} = \\ &100\% \text{ (flat)} \end{aligned}$$



The image cannot be displayed. Your computer may not have enough memory to open the image, or the image may have been corrupted. Restart your computer, and then open the file again. If the red x still appears, you may have to delete the image and then insert it again.

# Our Universe





The image cannot be displayed. Your computer may not have enough memory to open the image, or the image may have been corrupted. Restart your computer, and then open the file again. If the red x still appears, you may have to delete the image and then insert it again.



The image cannot be displayed. Your computer may not have enough memory to open the image, or the image may have been corrupted. Restart your computer, and then open the file again. If the red x still appears, you may have to delete the image and then insert it again.



The image cannot be displayed. Your computer may not have enough memory to open the image, or the image may have been corrupted. Restart your computer, and then open the file again. If the red x still appears, you may have to delete the image and then insert it again.



**So, Accelerated  
Expansion is Caused by  
the Repulsive Gravity of  
Dark Energy**

**Any Questions?**



The image cannot be displayed. Your computer may not have enough memory to open the image, or the image may have been corrupted. Restart your computer, and then open the file again. If the red x still appears, you may have to delete the image and then insert it again.

May 1998

Birth of Funny Energy

But, Focus Groups

Didn't Like Name

**August 1998**

**Birth of Dark Energy**


Third Stromlo Symposium

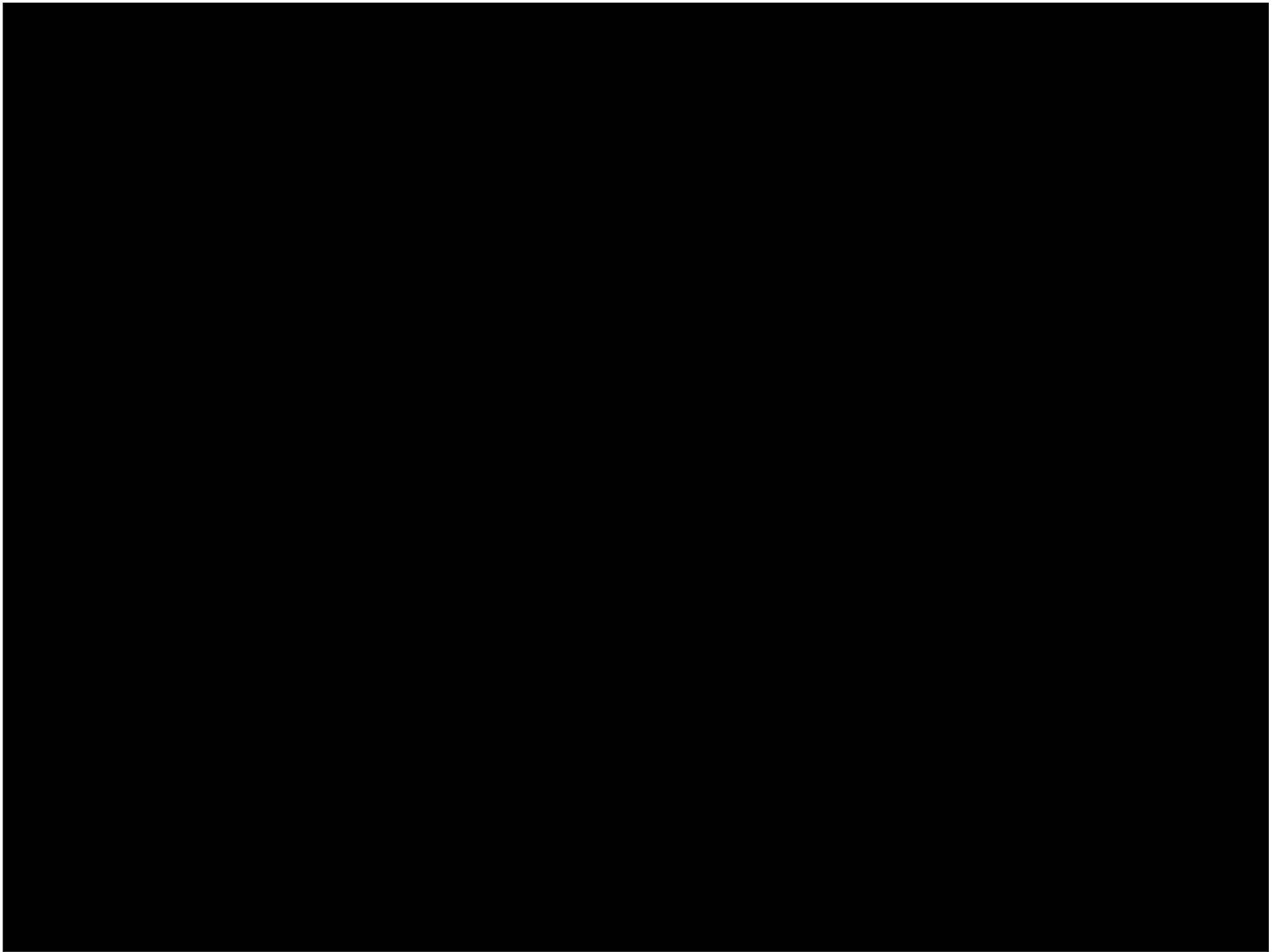
astro-ph/9811454



The image cannot be displayed. Your computer may not have enough memory to open the image, or the image may have been corrupted. Restart your computer, and then open the file again. If the red x still appears, you may have to delete the image and then insert it again.



 The image cannot be displayed. Your computer may not have enough memory to open the image, or the image may have been corrupted. Restart your computer, and then open the file again. If the red x still appears, you may have to delete the image and then insert it again.



# The Cosmic Landscape of Superstring Theory

- M-theory  $\rightarrow 10^{500}$  vacua
- $\mathcal{Q}_{\text{vac}} \sim O(m_{\text{Pl}}^4) \pm O(m_{\text{Pl}}^4)$
- Universe has a multiverse structure & we were lucky (narcissistic principle)
- Testable??
- Extravagant solution!



✘ The image cannot be displayed. Your computer may not have enough memory to open the image, or the image may have been corrupted. Restart your computer, and then open the file again. If the red x still appears, you may have to delete the image and then insert it again.

✘ The image cannot be displayed. Your computer may not have enough memory to open the image, or the image may have been corrupted. Restart your computer, and then open the file again. If the red x still appears, you may have to delete the image and then insert it again.





The image cannot be displayed. Your computer may not have enough memory to open the image, or the image may have been corrupted. Restart your computer, and then open the file again. If the red x still appears, you may have to delete the image and then insert it again.




The image cannot be displayed. Your computer may not have enough memory to open the image, or the image may have been corrupted. Restart your computer, and then open the file again. If the red x still appears, you may have to delete the image and then insert it again.

**@ Joe Turner, Age 6**

 The image cannot be displayed. Your computer may not have enough memory to open the image, or the image may have been corrupted. Restart your computer, and then open the file again. If the red x still appears, you may have to delete the image and then insert it again.

 The image cannot be displayed. Your computer may not have enough memory to open the image, or the image may have been corrupted. Restart your computer, and then open the file again. If the red x still appears, you may have to delete the image and then insert it again.

 The image cannot be displayed. Your computer may not have enough memory to open the image, or the image may have been corrupted. Restart your computer, and then open the file again. If the red x still appears, you may have to delete the image and then insert it again.



The image cannot be displayed. Your computer may not have enough memory to open the image, or the image may have been corrupted. Restart your computer, and then open the file again. If the red x still appears, you may have to delete the image and then insert it again.

cannot be displayed. Your computer may not have enough memory to open the image, or the image may have been corrupted. Restart your computer, and then open the file again. If the red x still appears, you may have to delete the image and then insert it again.

# From Here to Eternity

**In the Presence of Dark Energy, a Flat Universe Can Expand Forever, Re-collapse, or Even Experience a Big Rip!**



The image cannot be displayed. Your computer may not have enough memory to open the image, or the image may have been corrupted. Restart your computer, and then open the file again. If the red x still appears, you may have to delete the image and then insert it again.



The image cannot be displayed. Your computer may not have enough memory to open the image, or the image may have been corrupted. Restart your computer, and then open the file again. If the red x still appears, you may have to delete the image and then insert it again.

**Cannot Understand Our Cosmic Destiny Until We Understand What Dark Energy Is!**

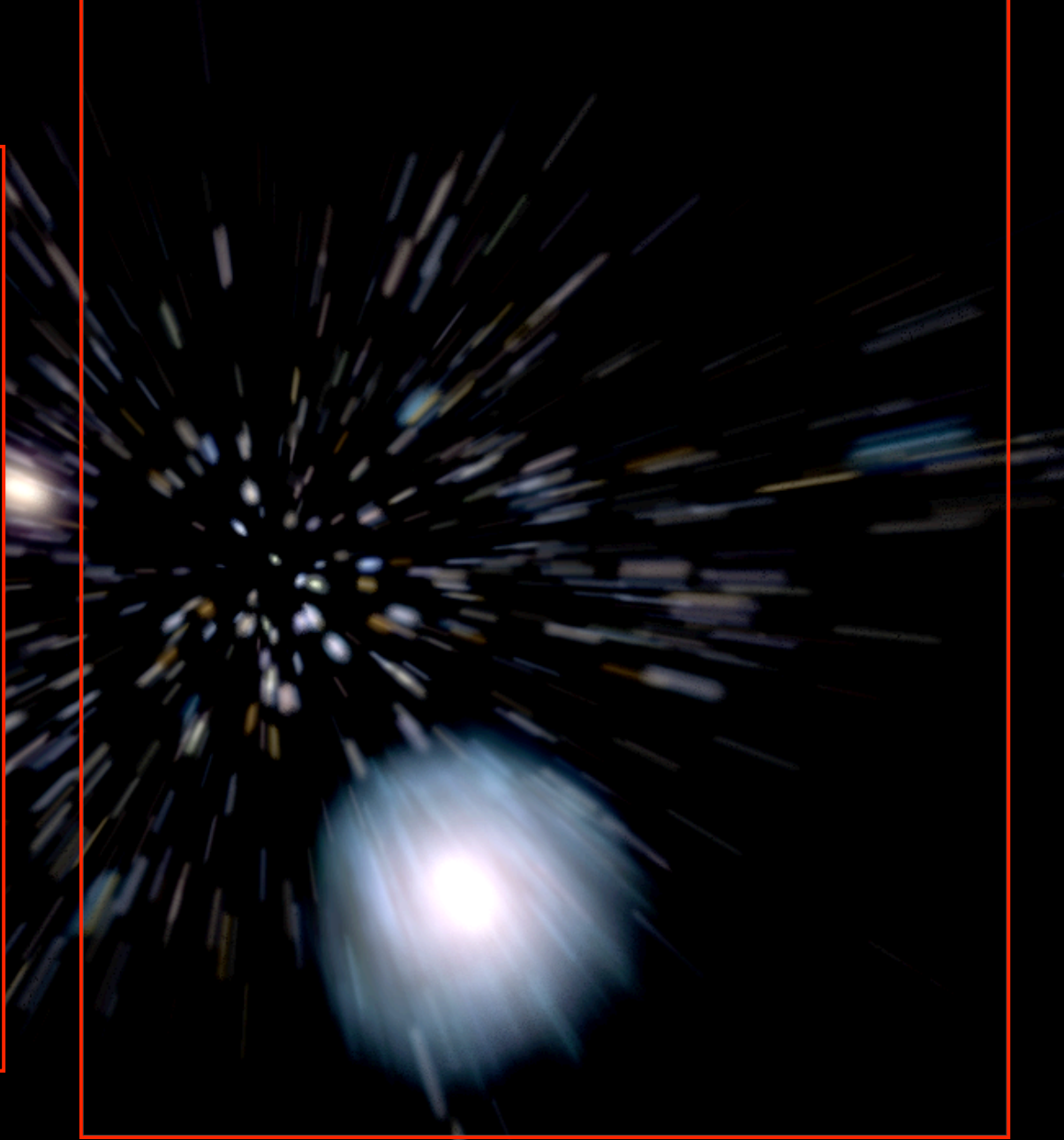


**Important**

**At the very  
least, we can  
now say that  
the formation  
of our  
Universe was  
the battle  
between the  
two dark titans**



The image cannot be displayed. Your computer may not have enough memory to open the image, or the image may have been corrupted. Restart your computer, and then open the file again. If the red x still appears, you may have to delete the image and then insert it again.





The image cannot be displayed. Your computer may not have enough memory to open the image, or the image may have been corrupted. Restart your computer, and then open the file again. If the red x still appears, you may have to delete the image and then insert it again.

The image cannot be displayed. Your computer may not have enough memory to open the image, or the image may have been corrupted. Restart your computer, and then open the file again. If the red x still appears, you may have to delete the image and then insert it again.

The image cannot be displayed. Your computer may not have enough memory to open the image, or the image may have been corrupted. Restart your computer, and then open the file again. If the red x still appears, you may have to delete the image and then insert it again.


**Youbetcha  
Katie, I believe  
in Dark Energy –  
we can see it  
from Alaska!**

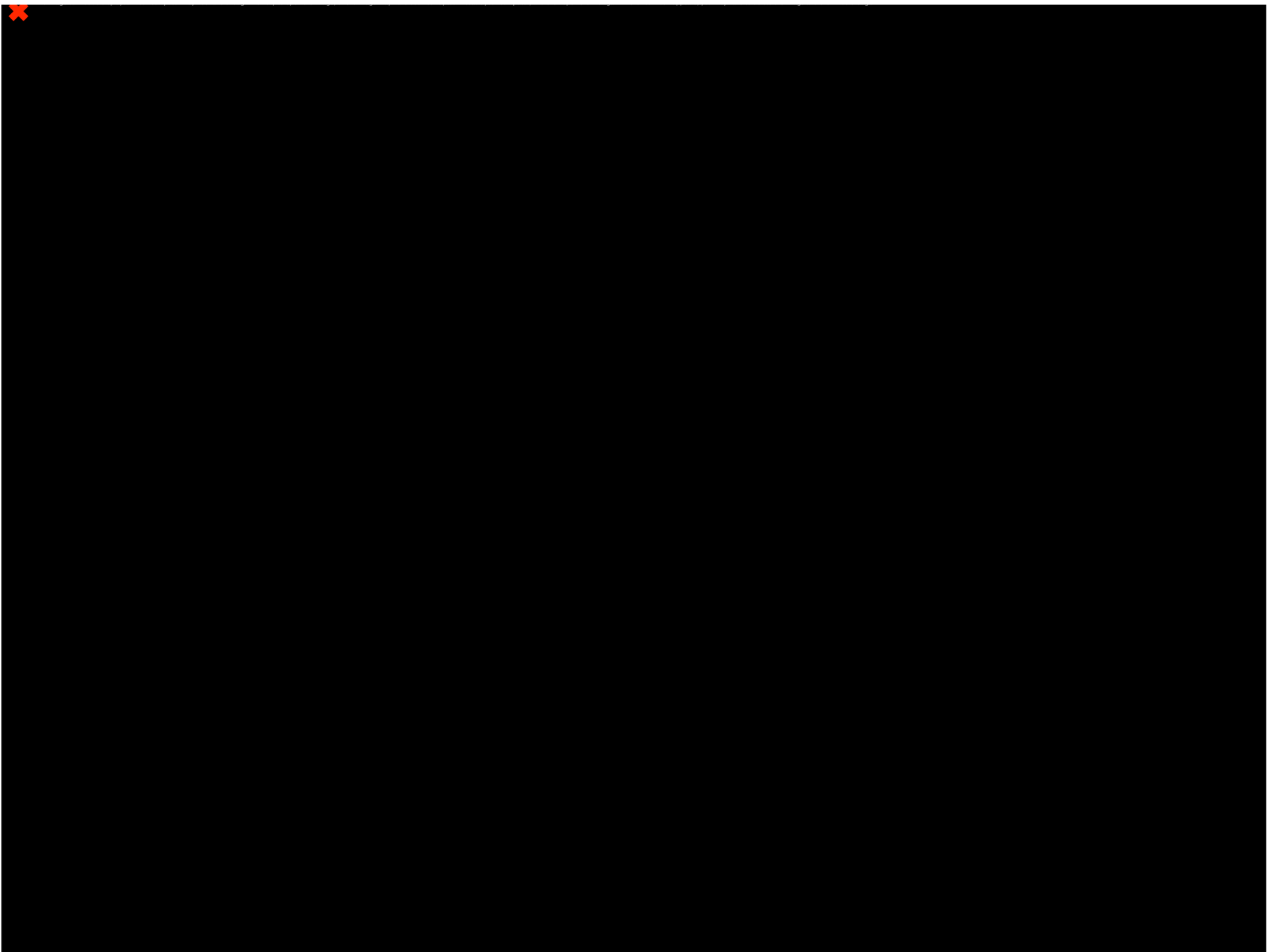
The image cannot be displayed. Your computer may not have enough memory to open the image, or the image may have been corrupted. Restart your computer, and then open the file again. If the red x still appears, you may have to delete the image and then insert it again.

# 3 Epochs


## 3 dimensionless ratios

- $1 + z_{\text{DE}} = [\Omega_{\text{DE}}/\Omega_{\text{M}}]^{1/3} \approx 1.37$
- $1 + z_{\text{M}} = \Omega_{\text{M}}/\Omega_{\text{R}} \approx 3300$
- NB:  $1 + z_{\text{DEC}} \approx 1100 \sim [13.6 \text{ eV}/3 \text{ K}]/\ln(1/\eta)$
- $\Omega_{\text{CDM}}/\Omega_{\text{B}} \approx 7$
- $\Omega_{\text{B}}/\Omega_{\text{V}} \sim 40$
- $(1 + z_{\text{M}})/(1 + z_{\text{DEC}}) \sim 3$


 The image cannot be displayed. Your computer may not have enough memory to open the image, or the image may have been corrupted. Restart your computer, and then open the file again. If the red x still appears, you may have to delete the image and then insert it again.



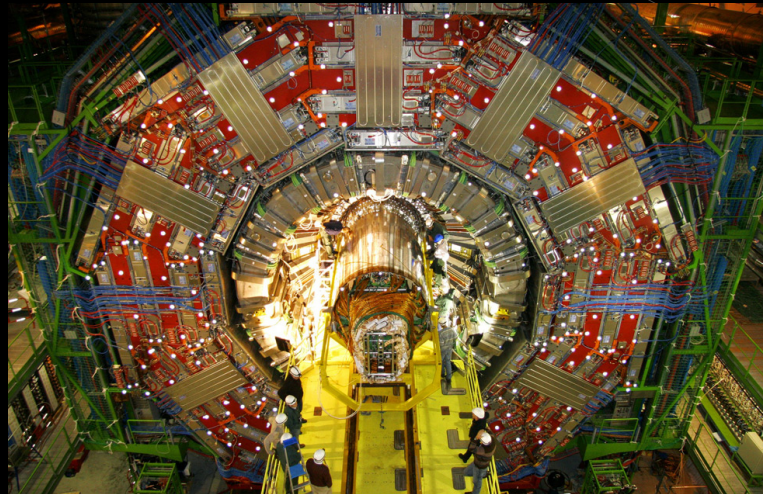
# Probes of Dark Energy: Telescopes and Accelerators

 The image cannot be displayed. Your computer may not have enough memory to open the image, or the image may have been corrupted. Restart your computer, and then open the file again. If the red x still appears, you may have to delete the image and then insert it again.

SNAP/JDEM:  
Probing Dark  
Energy by  
Measuring  
the Past  
Expansion Rate

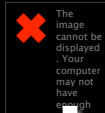
 The image cannot be displayed. Your computer may not have enough memory to open the image, or the image may have been corrupted. Restart your computer, and then open the file again. If the red x still appears, you may have to delete the image and then insert it again.

LSST: Probe Dark Energy  
by Measuring the Evolution  
of Structure in the Universe



LHC: Probing  
Dark Energy  
by Searching for  
SuperSymmetry

# The Dark Side of the Universe



## Stuff of the Universe

Stars: 0.5%

Hot Atoms: 4.0%

Dark Matter: 24%


(Neutrinos: few 0.1%)


Dark Energy: 71%

A large, semi-transparent error message box with a red 'x' icon. The text inside reads: "The image cannot be displayed. Your computer may not have enough memory to open the image, or the image may have been corrupted. Restart your computer, and then open the file again. If the red x still appears, you may have to delete the image and then insert it again."/>


The image cannot be displayed. Your computer may not have enough memory to open the image, or the image may have been corrupted. Restart your computer, and then open the file again. If the red x still appears, you may have to delete the image and then insert it again.

# Waiting for Copernicus?

 The image cannot be displayed. Your computer may not have enough memory to open the image, or the image may have been corrupted. Restart your computer, and then open the file again. If the red x still appears, you may have to delete the image and then insert it again.

 The image cannot be displayed. Your computer may not have enough memory to open the image, or the image may have been corrupted. Restart your computer, and then open the file again. If the red x still appears, you may have to delete the image and then insert it again.

The image cannot be displayed. Your computer may not have enough memory to open the image, or the image may have been corrupted. Restart your computer, and then open the file again. If the red x still appears, you may have to delete the image and then insert it again.

 The image cannot be displayed. Your computer may not have enough memory to open the image, or the image may have been corrupted. Restart your computer, and then open the file again. If the red x still appears, you may have to delete the image and then insert it again.



# Big Questions!

The image cannot be displayed. Your computer may not have enough memory to open the image, or the image may have been corrupted. Restart your computer, and then open the file again. If the red x still appears, you may have to delete the image and then insert it again.

... for the next generation of  
scientists to answer



The image cannot be displayed. Your computer may not have enough memory to open the image, or the image may have been corrupted. Restart your computer, and then open the file again. If the red x still appears, you may have to delete the image and then insert it again.



The image cannot be displayed. Your computer may not have enough memory to open the image, or the image may have been corrupted. Restart your computer, and then open the file again. If the red x still appears, you may have to delete the image and then insert it again.